

**TECHNICAL MANUAL**

**UNIT INTERMEDIATE DIRECT SUPPORT  
AND INTERMEDIATE GENERAL SUPPORT  
MAINTENANCE REPAIR PARTS AND SPECIAL TOOLS LIST**

**COMPRESSOR UNIT, RECIPROCATING  
NSN 4310-01-247-2584**

**This copy is a reprint which includes  
current pages from Changes 1 and 2.**

**Approved for public release; distribution is unlimited.**

---

**HEADQUARTERS, DEPARTMENT OF THE ARMY**

**15 NOVEMBER 1989**

CHANGE  
NO. 2

HEADQUARTERS  
DEPARTMENT OF THE ARMY  
WASHINGTON, D.C., 30 June 1993

Unit, Intermediate Direct Support and  
Intermediate General Support Maintenance  
Repair Parts and Special Tools List

COMPRESSOR UNIT, RECIPROCATING  
NSN 4310-01-247-0716

DISTRIBUTION STATEMENT A: Approved for public release; distribution is unlimited

TM 5-4310-382-23P, 15 November 1989, is changed as follows:

1. Remove and insert pages as indicated below. New or changed text material is indicated by a vertical bar in the margin. An illustration change is indicated by a miniature pointing hand.

Remove pages

12-1 and fig 13

Insert pages

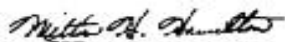
12-1 and fig 13

2. Retain this sheet in front of manual for reference purposes.

**By Order of the Secretary of the Army:**

**GORDON R. SULLIVAN**  
*General, United States Army*  
*Chief of Staff*

Official:



**MILTON H. HAMILTON**  
*Administrative Assistant to the*  
*Secretary of the Army*  
04498

**DISTRIBUTION:**

To be distributed in accordance with DA Form 12-25-E, block no. 4476, requirements for TM 5-4310-382-23P.

CHANGE  
NO. 1

HEADQUARTERS  
DEPARTMENT OF THE ARMY  
WASHINGTON, D.C., 9 NOVEMBER 1992

Unit, Intermediate Direct Support and  
Intermediate General Support Maintenance  
Repair Parts and Special Tools List

**COMPRESSOR UNIT, RECIPROCATING  
NSN 4310-01-247-0716**

Approved for public release; Distribution is unlimited

TM 5-4310-382-23P, 15 November 1989 is changed as follows:

1. Remove and insert pages as indicated below. New or changed text material is indicated by a vertical bar in the margin. An illustration change is indicated by a miniature pointing hand.

Remove pages

I-17 and I-18

Insert pages

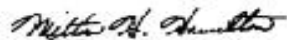
I-17 and I-18

2. Retain this sheet in front of manual for reference purposes.

**By Order of the Secretary of the Army:**

**GORDON R. SULLIVAN**  
*General, United States Army*  
*Chief of Staff*

Official:



**MILTON H. HAMILTON**  
*Administrative Assistant to the*  
*Secretary of the Army*  
02887

**DISTRIBUTION:**

To be distributed in accordance with DA Form 12-25-E, block no. 4476, requirements for TM 5-4310-382-23P.

**UNIT, DIRECT AND GENERAL SUPPORT MAINTENANCE  
REPAIR PARTS AND SPECIAL TOOLS LIST  
FOR  
COMPRESSOR UNIT, RECIPROCATING  
NSN: 4310-01-247-2584**

Current as of 21 June 1989

**REPORTING ERRORS AND RECOMMENDING IMPROVEMENTS**

You can help improve this manual. If you find any mistakes or if you know of a way to improve the procedures, please let us know. Mail your letter, DA Form 2028 (Recommended Changes to Publications and Blank Forms), or DA Form 2028-2 located in the back of this manual to Commander, ATTN: AMSTR-MCTS, 4300 Goodfellow Blvd., St. Louis, MO 63120. A reply will be furnished to you.

Approved for public release; distribution is unlimited.

**TABLE OF CONTENTS**

	Page	Illus/ Figure
Section I. INTRODUCTION .....	1	
Section II. REPAIR PARTS LIST		
Group 01. Fuel System		
Fuel tank, lines, filter and fittings .....	1-1	1
Group 02. Compressor Drive		
Belt Guard Assembly .....	2-1	2
V Belts, drive pulley, and take-up belt assembly .....	3-1	3
Group 03. Engine Assembly		
Air cleaner .....	4-1	4
Carburetor .....	5-1	5
Fuel pump, oil gage rod, tube, drain, and muffler .....	6-1	6
Starter, clutch, and blower housing .....	7-1	7
Ignition system, governor linkage, and throttle linkage .....	8-1	8
Cylinder head .....	9-1	9
Engine assembly .....	10-1	10

TABLE OF CONTENTS (CONT)

	Page	Illus/ Figure
Group 04. Compressor Assembly		
Air cleaner assembly, oil filler cap, plug, and drain .....	11-1	11
Tube assemblies, engine speed control, fan, and pulley .....	12-1	12
Valves; intake and exhaust, and cylinder head .....	13-1	13
Piston and connecting rods .....	14-1	14
Crankshaft, bearings, seals, and cylinder block .....	15-1	15
Group 05. Air Discharge System		
Hose and inflator gage .....	16-1	16
Relief valves, air gage, drain cock, air valve (tank), and air tank .....	17-1	17
Section III. SPECIAL TOOL LIST .....	18-1	18
Section IV. Cross Reference Indexes .....	I-1	
National Stock Number Index .....	I-1	
Part Number Index .....	I-3	
Figure and Item Number Index .....	I-4	

UNIT, INTERMEDIATE DIRECT SUPPORT  
AND INTERMEDIATE GENERAL SUPPORT  
REPAIR PARTS AND SPECIAL TOOLS LIST

FOR

COMPRESSOR UNIT, RECIPROCATING  
NSN 4310-01-247-2584

SECTION I. INTRODUCTION

**1. SCOPE.** This RPSTL lists and authorizes spares and repair parts; special tools; special test, measurement, and diagnostic equipment (TMDE); and other special support equipment required for performance of unit intermediate direct support and intermediate general support maintenance of the Reciprocating Compressor. It authorizes the requisitioning, issue, and disposition of spares, repair parts and special tools as indicated by the source, maintenance and recoverability (SMR) codes.

**2. GENERAL.** In addition to this section, Introduction, this Repair Parts and Special Tools List is divided into the following sections:

**a. Section II. Repair Parts List.** A list of spares and repair parts authorized by this RPSTL for use in the performance of maintenance. The list also includes parts which must be removed for replacement of the authorized parts. Parts lists are composed of functional groups in ascending alphanumeric sequence, with the parts in each group listed in ascending figure and item number sequence. Bulk materials are listed in item name sequence. Repair parts kits are listed separately in their own functional group within Section II. Repair parts for repairable special tools are also listed in this section. Items listed are shown on the associated illustration(s)/figure(s).

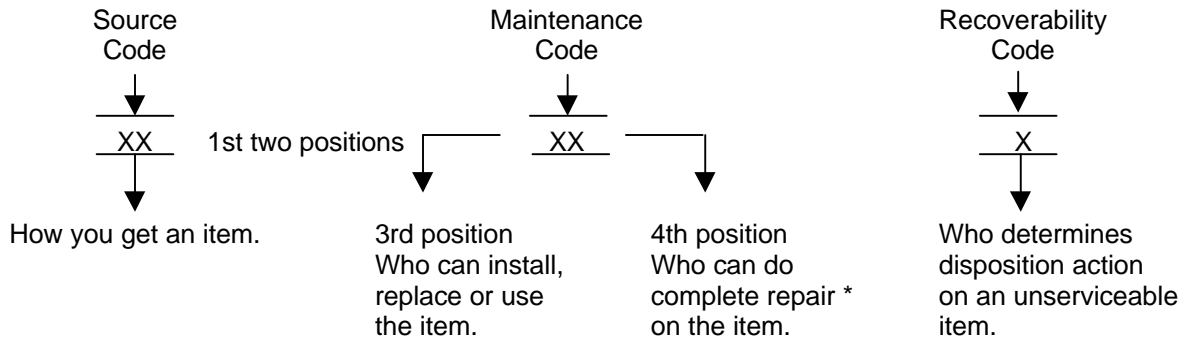
**b. Section III. Special Tools List.** A list of special tools, special TMDE, and other special support equipment authorized by this RPSTL (as indicated by Basis of Issue (BOI) information in DESCRIPTION AND USABLE ON CODE column) for the performance of maintenance.

**c. Section IV. Cross-references Indexes.** A list, in National Item Identification Number (NIIN) sequence, of all National stock numbered items appearing in the listing, followed by a list in alphanumeric sequence of all part numbers appearing in the listings. National stock numbers and part numbers are cross referenced to each illustration figure and item number appearance. The figure and item number index lists figure and item number in alphanumeric sequence and cross references NSN, FSCM and part number.

**3. EXPLANATION OF COLUMNS (SECTIONS II AND III).**

**a. ITEM NO. (Column (1)).** Indicates the number used to identify items called out in the illustration.

**b. SMR Code (Column (2)).** The Source, Maintenance, and Recoverability (SMR) code is a 5-position code containing supply/requisitioning information, maintenance category authorization criteria, and disposition instruction, as shown in the following breakout:



**NOTE**

**\*Complete Repair: Maintenance capacity, capability, and authority to perform all corrective maintenance tasks of the "Repair" function in a use/user environment in order to restore serviceability to a failed item.**

- (1) **Source Code.** The source code tells you how to get an item needed for maintenance, repair, or overhaul of an end item/equipment. Explanations of source codes follows:

Code

PA  
PB  
PC\*\*  
PD  
PE  
PF  
PG

Explanation

Stocked items; use the applicable NSN to request/requisition items with these source codes. They are authorized to the category indicated by the code entered in the 3d position of the SMR code.

\*\*NOTE: Items coded PC are subject to deterioration.

KD  
KF  
KB

Items with these codes are not to be requested/requisitioned individually. They are part of a kit which is authorized to the maintenance category indicated in the 3d position of the SMR code. The complete kit must be requisitioned and applied.

Explanation

MO - (Made at org/  
AVUM Level)  
MF - (Made at DS/  
AVUM Level)  
MH - (Made at GS  
Level)  
ML - (Made at Spe-  
cialized Repair  
Activity  
(SRA))  
MD - (Made at  
Depot)

Items with these codes are not to be requested/requisitioned individually. They must be made from bulk material which is identified by the part number in the DESCRIPTION and USABLE ON CODE (UOC) column and listed in the Bulk Material group of the repair parts list in this RPSTL. If the item is authorized to you by the 3d position code of the SMR code, but the source code indicates it is made at a higher level, order the item from the higher level of maintenance.

Code	Explanation
AO - (Assembled by org/AVUM Level)	Items with these codes are not to be requested/requisitioned individually. The parts that make up the assembled item must be requisitioned or fabricated and assembled at the level of maintenance indicated by the source code. If the 3d position code of the SMR code authorizes you to replace the item, but the source code indicates the items are assembled at a higher level, order the item from the higher level of maintenance.
AF - (Assembled by DS/AVIM Level)	
AH - (Assembled by GS category)	
AL - (Assembled by (SRA))	
AD - (Assembled by Depot)	

Code	Explanation
XA - -	Do not requisition "XA" -coded item. Order its next higher assembly. (Also, refer to the NOTE below.)
XB - -	If an "XB" item is not available from salvage, order it using the FSCM and part number given.
XC - -	Installation drawing, diagram, instruction sheet, field service drawing, that is identified by manufacturer's part number.
XD - -	Item is not stocked. Order an "XD" -coded item through normal supply channels using the FSCM and part number given, if no NSN is available.

**NOTE**

**Cannibalization or controlled exchange, when authorized, may be used as a source of supply for items with the above source codes, except for those source coded "XA" or those aircraft support items restricted by requirements of AR 750-1.**

**(2) Maintenance Code.** Maintenance codes tells you the level(s) of maintenance authorized to USE and REPAIR support items. The maintenance codes are entered in the third and fourth positions of the SMR code as follows:

(a) The maintenance code entered in the third position tells you the lowest maintenance level authorized to remove, replace, and use an item. The maintenance code entered in the third position will indicate authorization to one of the following levels of maintenance.

Code	Application/Explanation
C	-Crew or operator maintenance done within organizational or aviation unit maintenance.
O	-Organizational or aviation unit category can remove, replace, and use the item.



F -Direct support or aviation intermediate level can remove, replace, and use the item.

H -General support level can remove, replace, and use the item.

L -Specialized repair activity can remove, replace, and use the item.

D -Depot level can remove, replace, and use the item.

- (b) The maintenance code entered in the fourth position tells whether or not the item is to be repaired and identifies the lowest maintenance level with the capability to do complete repair (i.e. perform all authorized repair functions.) **NOTE: Some limited repair may be done on the item at a lower level of maintenance, if authorized by the Maintenance Allocation Chart (MAC) and SMR codes. This position will contain one of the following maintenance codes.**

Code	Application/Explanation
------	-------------------------

O -Organizational or (aviation unit) is the lowest level that can do complete repair of the item.

F -Direct support or aviation intermediate is the lowest level that can do complete repair of the item.

H -General Support is the lowest level that can do complete repair of the item.

L -Specialized repair activity is the lowest level that can do complete repair of the item.

D -Depot is the lowest level that can do complete repair of the item.

Z -Nonreparable. No repair is authorized.

B -No repair is authorized. (No parts or special tools are authorized for the maintenance of a "B" coded item). However, the item may be reconditioned by adjusting, lubricating, etc., at the user level.

- (3) Recoverability Code.** Recoverability codes are assigned to items to indicate the disposition action on unserviceable items. The recoverability code is entered in the fifth position of the SMR Code as follows:

Recoverability Codes	Application/Explanation
-------------------------	-------------------------

Z --Nonreparable item. When unserviceable, condemn and dispose of the item at the level of maintenance shown in 3d position of SMR Code.

Recoverability  
Codes

## Application/Explanation

- O --Reparable item. When uneconomically reparable, condemn and dispose of the item at organizational or aviation unit level
- F --Reparable item. When uneconomically reparable, condemn and dispose of the item at the direct support or aviation intermediate level
- H --Reparable item. When uneconomically reparable, condemn and dispose of the item at the general support level.
- D --Reparable item. When beyond lower level repair capability, return to depot. Condemnation and disposal of item not authorized below depot level.
- L --Reparable item. Condemnation and disposal not authorized below specialized repair activity (SRA).
- A --Item requires special handling or condemnation procedures because of specific reasons (e.g. precious metal content, high dollar value, critical material, or hazardous material). Refer to appropriate manuals/directives for specific instructions.

**c. FSCM (Column (3)).** The Federal Supply Code for Manufacturer (FSCM) is a 5-digit numeric code which is used to identify the manufacturer, distributor, or Government agency, etc., that supplies the item.

**d. PART NUMBER (Column (4)).** Indicates the primary number used by the manufacturer, (individual, company, firm, corporation, or Government activity), which controls the design and characteristics of the item by means of its engineering drawings, specifications standards, and inspection requirements to identify an item or range of items.

**NOTE**

**When you use an NSN to requisition an item, the item you receive may have a different part number from the part ordered.**

**e. DESCRIPTION AND USABLE ON CODE (UOC)(Column (5)).** This column includes the following information:

- (1) The Federal item name and, when required, a minimum description to identify the item.
- (2) The physical security classification of the item is indicated by the parenthetical entry, e.g., Phy Sec CI - Confidential, Phy Sec CI (S) - Secret, Phy Sec CI (T) - Top Secret.
- (3) Items that are included in kits and sets are listed below the name of the kit or set.
- (4) Spare/repair parts that make up an assembled item are listed immediately following the assembled item line entry.
- (5) Part numbers for bulk materials are referenced in this column in the line item entry for the item to be manufactured/fabricated.
- (6) When the item is not used with all serial numbers of the same model, the effective serial numbers are shown on the last line(s) of the description (before UOC).

- (7) The usable on code, when applicable (see paragraph 5, Special Information).
- (8) In the Special Tools List section, the basis of issue (BOI) appears as the last line(s) in the entry for each special tool, special TMDE, and other special support equipment. When density of equipments supported exceeds density spread indicated in the basis of issue the total authorization is increased proportionately.
- (9) The statement "END OF FIGURE" appears just below the last item description in Column 5 for a given figure in both Section II and Section III.
- (10) The indenture, shown as dots appearing before the repair part, indicates that the item is a repair part of the next higher assembly.

f. **QTY (Column (6)).** The QTY (quantity per figure column) indicates the quantity of the item used in the breakout shown on the illustration figure, which is prepared for a functional group, subfunctional group, or an assembly. A "V" appearing in this column in lieu of a quantity indicates that the quantity is variable and may vary from application to application.

#### 4. EXPLANATION OF COLUMNS (SECTION IV).

##### a. NATIONAL STOCK NUMBER (NSN) INDEX.

- (1) **STOCK NUMBER column.** This column lists the NSN by National item identification number (NIIN) sequence. The NIIN consists of the last nine digits of the NSN, i.e. (5305-01-574-1467).  
NSN  
NIIN

When using this column to locate an item, ignore the first 4 digits of the NSN. However, the complete NSN should be used when ordering items by stock number.

- (2) **FIG. column.** This column lists the number of the figure where the item is identified/located. The figures are in numerical order in Section II and Section III.
- (3) **ITEM column.** The item number identifies the item associated with the figure listed in the adjacent FIG. column. This item is also identified by the NSN listed on the same line.

b. **PART NUMBER INDEX.** Part numbers in this index are listed by part number in ascending alphanumeric sequence (i e. vertical arrangement of letter and number combination which places the first letter or digit of each group in order A through Z, followed by the numbers 0 through 9 and each following letter or digit in like order).

- (1) **FSCM column.** The Federal Supply Code for Manufacturer (FSCM) is a 5-digit numeric code used to identify the manufacturer, distributor, or Government agency, etc., that supplies the item.
- (2) **PART NUMBER column.** Indicates the primary number used by the manufacturer (individual, firm, corporation, or Government activity), which controls the design and characteristics of the item by means of its engineering drawings, specifications standards, and inspection requirements to identify an item or range of items.
- (3) **STOCK NUMBER column.** This column lists the NSN for the associated part number and manufacturer identified in the PART NUMBER and FSCM columns to the left.

- (4) **FIG. column.** This column lists the number of the figure where the item is identified/located in Sections II and III.
- (5) **ITEM column.** The item number is that number assigned to the item as it appears in the figure referenced in adjacent figure number column.

**c. FIGURE AND ITEM NUMBER INDEX.**

- (1) **FIG. column.** This column lists the number of the figure where the item is identified/located in Section II and III.
- (2) **ITEM column.** The item number is that number assigned to the item as it appears in the figure referenced in the adjacent figure number column.
- (3) **STOCK NUMBER column.** This column lists the NSN for the item.
- (4) **FSCM column.** The Federal Supply Code for Manufacturer (FSCM) is a 5-digit numeric code used to identify the manufacturer, distributor, or Government agency, etc., that supplies the item.
- (5) **PART NUMBER column.** Indicates the primary number used by the manufacturer (individual, firm, corporation, or Government activity), which controls the design and characteristics of the item by means of its engineering drawings, specifications standards, and inspection requirements to identify an item or range of items.

**5. SPECIAL INFORMATION.**

**a. USABLE ON CODE.** The usable on code appears in the lower corner of the Description column heading. Usable on codes are shown as "UOC: ....." in the Description Column (justified left) on the last line applicable item description/nomenclature. Uncoded items are applicable to all models.

**b. ASSOCIATED PUBLICATIONS.** The publications listed below pertains to the Reciprocating Compressor Unit and its components.

Publication	Short Title
TM 5-4310-382-13	Reciprocating Compressor Unit

**6. HOW TO LOCATE REPAIR PARTS.**

**a. When National Stock Number or Part Number is NOT known.**

- (1) **First.** Using the table of contents, determine the assembly group or subassembly group to which the item belongs. This is necessary since figures are prepared for assembly groups and subassembly groups, and listings are divided into the same groups.
- (2) **Second.** Find the figure covering the assembly group or subassembly group to which the item belongs.
- (3) **Third.** Identify the item on the figure and note the item number.
- (4) **Fourth.** Refer to the Repair Parts List for the figure to find the part number for the item number noted on the figure.

(5) **Fifth.** Refer to the Part Number Index to find the NSN, if assigned.

**b. When National Stock Number or Part Number is Known:**

(1) **First.** Using the Index of National Stock Numbers and Part Numbers, find the pertinent National Stock Number or Part Number. The NSN index is in National Item Identification Number (NIIN) sequence (see c-4a.(1)). The part numbers in the Part Number index are listed in ascending alphanumeric sequence (see paragraph c-4.b). Both indexes cross-reference you to the illustration figure and item number of the item you are looking for.

(2) **Second.** After finding the figure and item number, verify that the item is the one you are looking for, then locate the item number in the repair parts list for the figure.

7. **ABBREVIATIONS.** Abbreviations used in this manual are listed in MIL-STD-12.

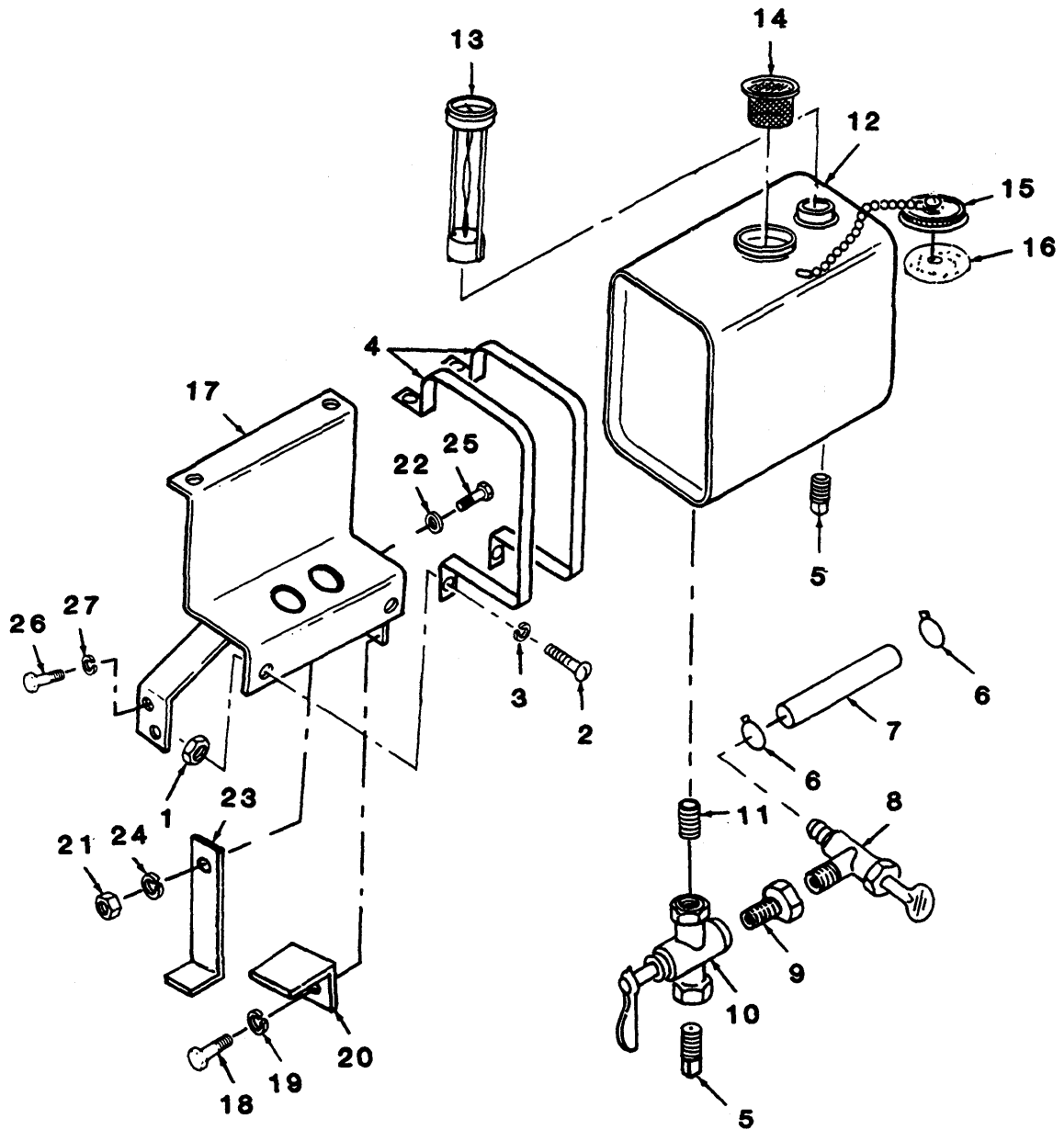


Figure 1. Fuel Tank, Lines, Filter, and Fittings.

SECTION II

TM 5-4310-382-23P

(1) ITEM NO	(2) SMR CODE	(3) FSCM	(4) PART NUMBER	(5) DESCRIPTION AND USABLE ON CODES (UOC)	(6) QTY
GROUP 01 FUEL SYSTEM					
FIG. 1 FUEL TANK, LINES, FILTER, AND FITTINGS					
1	PAOZZ	96906	MS51967-2	NUT, PLAIN, HEXAGON 1/4-20, STEEL .....	4
2	PAOZZ	96906	MS90725-10	SCREW, CAP, HEXAGON H 1/4-20X1.25LG, .....	4
				STEEL, GR5 .....	
3	PAOZZ	99539	CBM21389	WASHER, LOCK 1/4 IN, STEEL .....	4
4	XDOZZ	55921	CAA1938	STRAP, HOLD DOWN GAS TANK .....	2
5	PAOZZ	96906	MS51884-3	PLUG SQUARE HEAD 1/4 IN NPT, SOLID, .....	1
				STEEL .....	
6	PAOZZ	08645	93053	CLAMP, HOSE 1/4 ID X 1/2 OD, STEEL.....	2
7	PCOZZ	55921	OFC846B	HOSE, FUEL 1/4 IN. ID X 1/2 IN. OD, 4 .....	1
				IN. LG .....	
8	PAOZZ	08645	399949	VALVE, ANGLE 1/8 NPT X 1/4 ID HOSE.....	1
9	PAOZZ	96906	MS51887-1	BUSHING 1/4 MPT X 1/8 FPT, STEEL, .....	1
				GALVANIZED.....	
10	PAOZZ	31493	302WV3	VALVE, 3-WAY THREE 1/4 IN. NPTF.....	1
				PORTS, BRASS .....	
11	PAOZZ	96906	MS51953-25	NIPPLE, PIPE 1/4 IN X 7/8 LG, STEEL.....	1
12	XDOOO	86823	F-D-30543	TANK, FUEL COMPLETE, 3 1/2 GAL .....	1
				CAPACITY .....	
13	PAOZZ	23224	40-300-AB-10	.GAGE, FUEL INDICATOR .....	1
14	PAOZZ	86283	T-17-4	.SCREEN .....	1
15	PAOZZ	86283	T-19-1	.CAP ASSEMBLY 7 IN. LG CHAIN & .....	1
				CEMENTED GASKET .....	
16	PAOZZ	86823	A-21950	..GASKET .....	1
17	XDOZZ	55921	CAA1935	BRACKET .....	1
18	PAOZZ	96906	MS90725-6	SCREW, CAP, HEXAGON H 1/4-20 X 3/4 .....	2
				LG, STEEL, GR 5 .....	
19	PAOZZ	99539	CBM21389	WASHER, LOCK 1/4, SPLIT TYPE, STEEL.....	2
20	XDOZZ	55921	OFC292	BRACKET, FUEL PUMP .....	1
21	PAOZZ	96906	MS35649-2312	NUT, PLAIN, HEXAGON 5/16-18, STEEL.....	1
22	PAOZZ	96906	MS27183-11	WASHER, FLAT .....	1
23	XDOZZ	55921	OFC287	KEEPER, TAKEUP BOLT .....	1
24	PAOZZ	96906	MS35338-45	.WASHER, LOCK 5/16, STEEL.....	1
25	PAOZZ	96906	MS90725-34	BOLT, MACHINE 5/16-18 X 1.00 LG, .....	1
				STEEL .....	
26	PAOZZ	96906	MS90725-58	SCREW, CAP 3/8-1L X .75 LG, STEEL .....	4
27	PAOZZ	96906	MS35338-46	LOCKWASHER 3/8, SPLIT TYPE, STEEL.....	4

END OF FIGURE

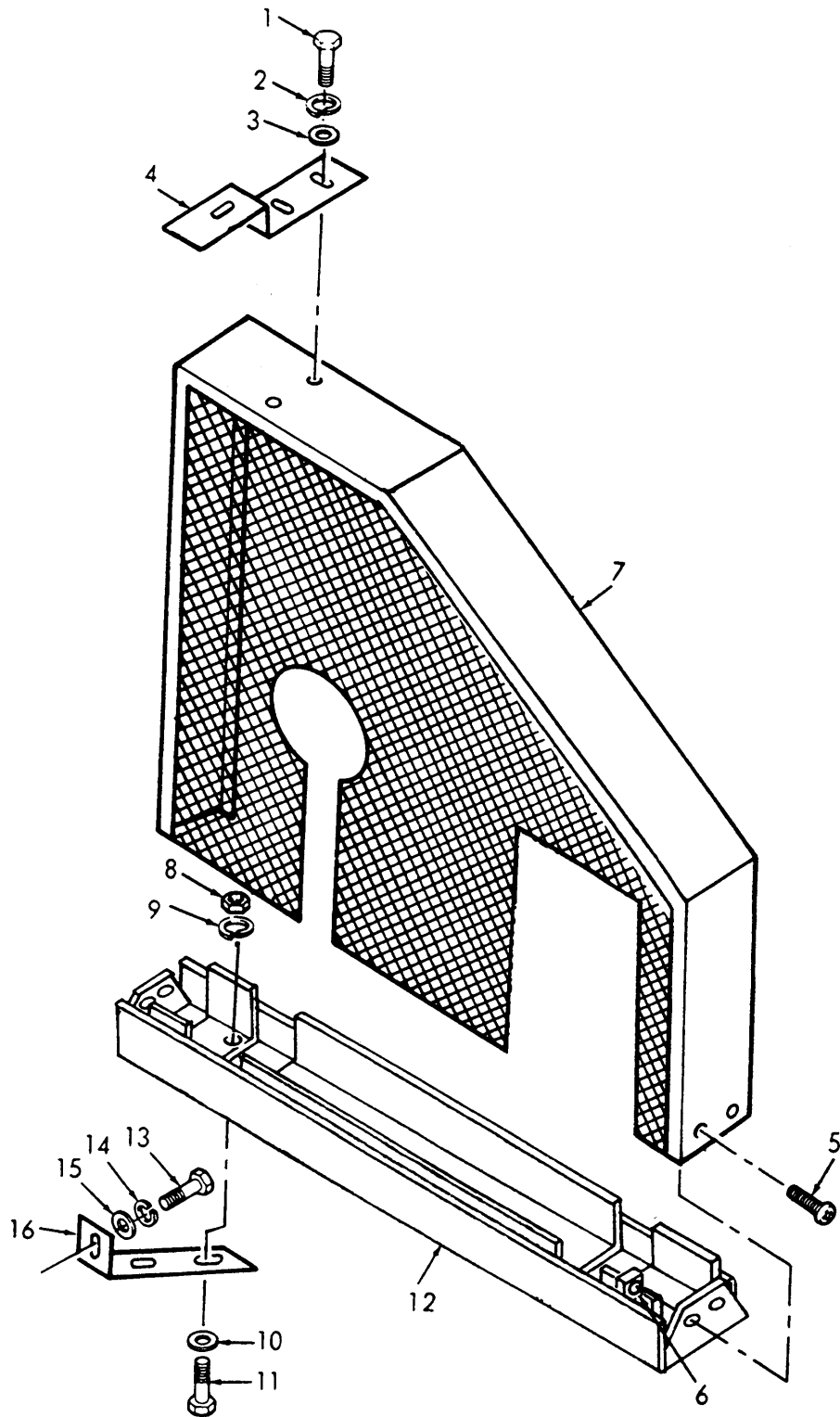


Figure 2. Belt Guard Assembly.



**SECTION II**

**TM 5-4310-382-23P**

(1) ITEM NO	(2) SMR CODE	(3) FSCM	(4) PART NUMBER	(5) DESCRIPTION AND USABLE ON CODES (UOC)	(6) QTY
GROUP 02 COMPRESSOR DRIVE					
FIG. 2 BELT GUARD ASSEMBLY					
1	PAOZZ	96906	MS90728-32	BOLT, MACHINE 3/8-18 X .75 LG, STEEL .....	2
2	PAOZZ	96906	MS35338-45	WASHER, LOCK 5/16, SPLIT TYPE, STEEL .....	2
3	PAOZZ	96906	MS27183-11	WASHER, FLAT 31 ID X .75 OD, STEEL .....	2
4	XBOZZ	55921	CAD2258	BRACKET, GUARD .....	1
5	PAOZZ	96906	MS51861-4	SCREW, TAPPING, THREA #2-32 X .38 LG, .....	4
				STEEL .....	
6	PAOZZ	89032	C1379-10241-1	NUT, SPEED TYPE U, 10-24 THD, STEEL .....	4
7	PBOZZ	55921	CAD2253	BELT GUARD , TOP .....	1
8	PAOZZ	96906	MS51967-2	NUT, PLAIN, HEXAGON 1/4-20, STEEL .....	4
9	PAOZZ	99539	CBM21389	WASHER, LOCK 1/4, SPLIT TYPE, STEEL .....	4
10	PAOZZ	96906	MS27183-9	WASHER, FLAT 25 ID X .56 OD, STEEL .....	4
11	PAOZZ	96906	MS90725-6	SCREW, CAP, HEXAGON H 1/4-20 X .75 .....	4
				LG, STEEL .....	
12	XDOZZ	55921	CAD2257	BELT GUARD, BOTTOM .....	1
13	PAOZZ	96906	MS90728-32	BOLT, MACHINE 3/8-16 X .75 LG, STEEL .....	4
14	PAOZZ	96906	MS35338-45	WASHER, LOCK 5/16, SPLIT TYPE, STEEL .....	4
15	PAOZZ	96906	MS27183-11	WASHER, FLAT 31 ID X .75 OD, STEEL .....	4
16	XDOZZ	55921	CAD2259	BRACKET, GUARD MTG .....	2

END OF FIGURE

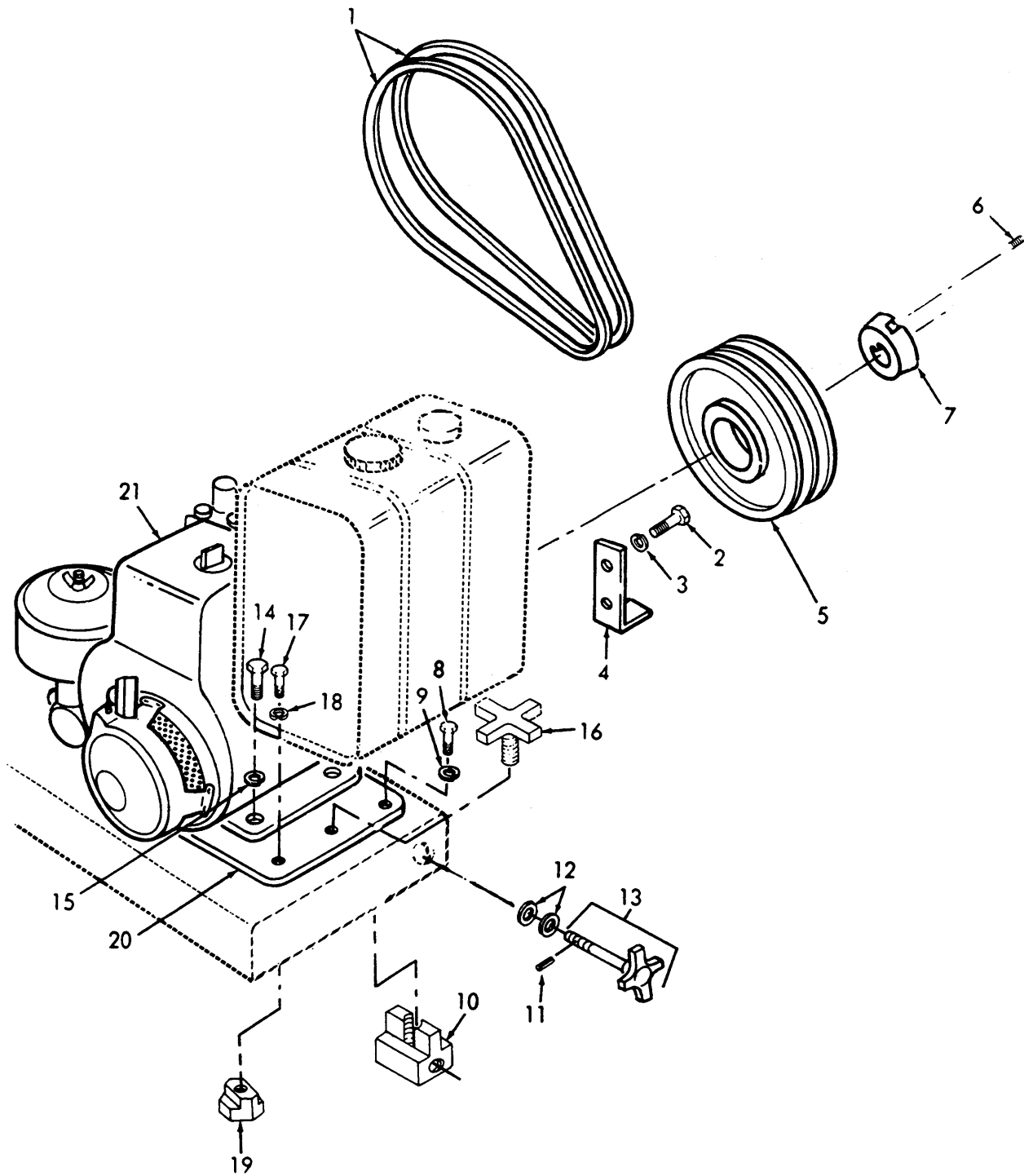


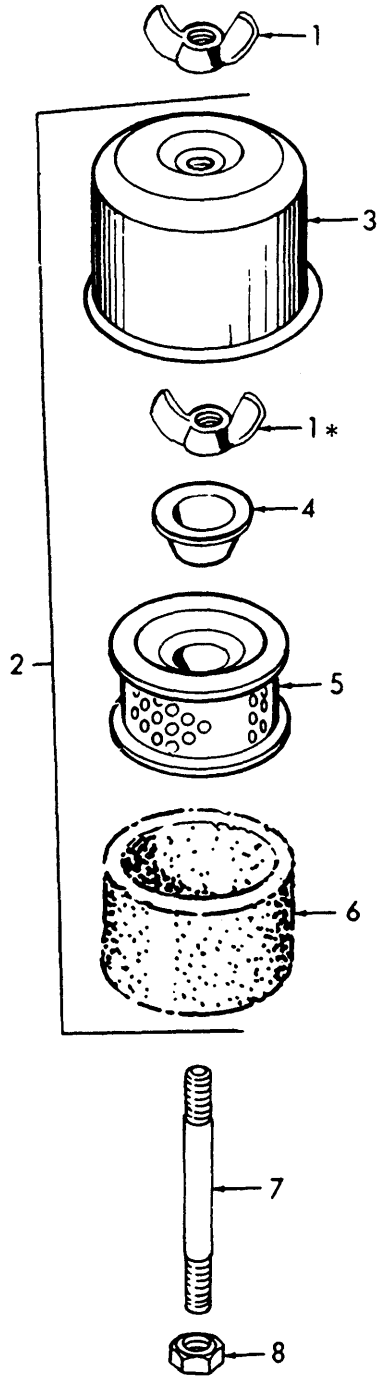
Figure 3. V Belts, Drive Pulley, and Take-Up Bolt Assembly.

## SECTION II

TM 5-4310-382-23P

(1) ITEM NO	(2) SMR CODE	(3) FSCM	(4) PART NUMBER	(5) DESCRIPTION AND USABLE ON CODES (UOC)	(6) QTY
GROUP 02 COMPRESSOR DRIVE					
FIG. 3 V BELTS, DRIVE PULLEY, AND TAKE-UP BOLT ASSEMBLY					
1	PAOZZ	24161	9720	BELT SET, V MATCHED SET, 1/2..... IN. NOM. WIDTH, 5/16 IN. NOM. THK, 72 IN. EFF. LG., GRADE A, STANDARD DUTY .....	1
2	PAOZZ	96906	MS90726-32	BOLT, MACHINE 5/16-24 X .75 LG, .....	2
3	PAOZZ	96906	MS35338-45	WASHER, LOCK 5/16, SPLIT TYPE, STEEL .....	2
4	XDOZZ	55921	OF478	BRACKET .....	1
5	XDOZZ	71956	B39728A	DRIVE PULLEY .....	1
6	PAOZZ	71956	400544	SETS SCREW 3/8-16 NC X 5/8 LG., .....	1
7	XDOZZ	71956	119219	OVAL POINT, STEEL .....	1
8	PAOZZ	96906	MS90725-111	BUSHING SUPPLIED WITH TWO 3/8-16 .....	1
9	PAOZZ	96906	MS35338-48	NC X 5/8 LG. SETSCREWS ; 1 IN. BORE.	1
10	PAOZZ	55921	OFC270	SCREW 1/2-13 X 1.25 LG, STEEL .....	1
11	PAOZZ	96906	MS16562-50	LOCK WASHER 1/2, SPRING TYPE, STEEL .....	1
12	PAOZZ	96906	MS15795-818	BLOCK, TAKE-UP .....	1
13	PAOZZ	55921	OFC268	PIN, SPRING 3/16 DIA X 1.00 LG, .....	1
14	PAOZZ	96906	MS90728-18	STEEL .....	2
15	PAOZZ	96906	MS35338-45	WASHER, FLAT 1/2, SAE, STEEL .....	2
16	PAOZZ	55921	OFC289	TAKE-UP BOLT ASSY .....	1
17	PAOZZ	96906	MS90728-62	SCREW, CAP, HEXAGON H 1/4-20 X 3.00 .....	4
18	PAOZZ	96906	MS35338-46	LG, STEEL .....	4
19	PAOZZ	55921	OFC288	WASHER, LOCK 5/16, SPLIT TYPE, STEEL .....	3
20	XDOZZ	55921	CAA1933	KNOB ASSEMBLY .....	3
21	PBOFF	08645	221432-0326	SCREW, CAP, HEXAGON H 3/8-16 X 1.25 .....	3
				LG, STEEL .....	3
				LOCK WASHER 3/8, SPLIT TYPE, STEEL .....	3
				BLOCK, SLIDE ENGINE PLATE .....	1
				PLATE .....	1
				ENGINE ASSEMBLY SINGLE CYL, 10 H.P. ....	1

END OF FIGURE



\* This item is not part of item 2.

Figure 4. Air Cleaner.

**SECTION II**

**TM 5-4310-382-23P**

(1) ITEM NO	(2) SMR CODE	(3) FSCM	(4) PART NUMBER	(5) DESCRIPTION AND USABLE ON CODES (UOC)	(6) QTY
GROUP 03 ENGINE ASSEMBLY					
FIG. 4 AIR CLEANER					
1	PAOZZ	96906	MS35425-39	.NUT, PLAIN, WING 1/4-20, STEEL .....	2
2	XDOOZ	08645	391063	.AIR CLEANER, INTAKE .....	1
3	XDOZZ	08645	222271	..COVER, AIR CLEANER .....	1
4	XDOZZ	08645	222272	..CUP, AIR CLEANER .....	1
5	PBOZZ	08645	390930	..FILTER ELEMENT, INTA.....	1
6	PAOZZ	08645	270782	..FILTER ELEMENT, INTA.....	1
7	XDOZZ	08645	231007	.STUD, AIR CLEANER .....	1
8	PAOZZ	96906	MS51968-2	.NUT, PLAIN, HEXAGON 1/4-28, STEEL.....	1

END OF FIGURE

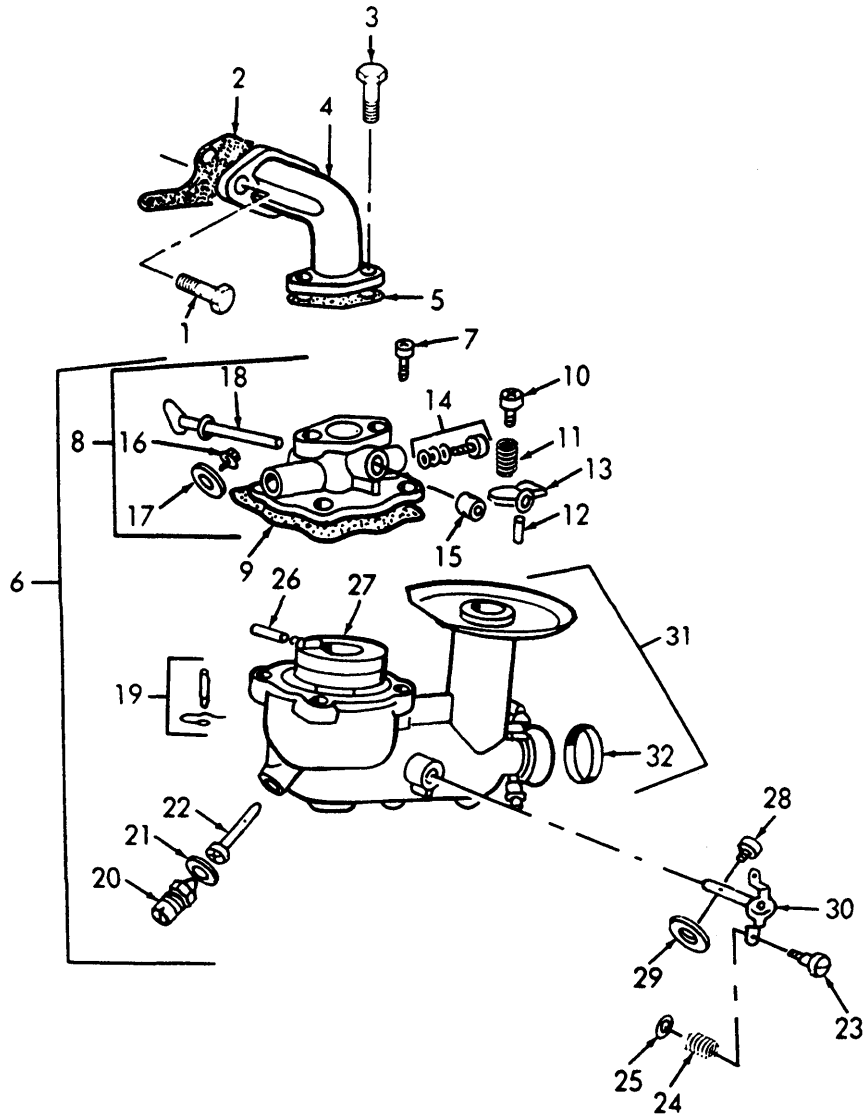


Figure 5. Carburetor.

## SECTION II

TM 5-4310-382-23P

(1) ITEM NO	(2) SMR CODE	(3) FSCM	(4) PART NUMBER	(5) DESCRIPTION AND USABLE ON CODES (UOC)	(6) QTY
GROUP 03 ENGINE ASSEMBLY					
FIG. 5 CARBURETOR					
1	PAOZZ	08645	93208	.SCREW .....	2
2	PAOZZ	08645	270872	.GASKET .....	1
3	PAOZZ	08645	93415	.SCREW .....	2
4	XDOZZ	08645	212301	.ELBOW .....	1
5	PAOZZ	08645	270267	.GASKET .....	1
6	PAOFF	08645	392033	CARBURETOR, FLOAT .....	1
UOC:EDA					
7	PAFZZ	08645	94152	..SCREW, BODY MTG .....	4
8	XDFFF	08645	392032	..BODY AY, UPPER CARB .....	1
9	PAFZZ	08645	270268	...GASKET .....	1
10	XAFZZ	08645	91920	...SCREW, MACHINE MACHINE SCREW .....	1
FIL. HD 8-32 .....					
11	XAFZZ	84830	LC-042D-3MW	...SPRING, HELICAL, COMP .....	1
12	XAFZZ	08645	93043	...PIN, STOP .....	1
13	XAFZZ	08645	212904	...STOP, THROTTLE .....	1
14	PAFZZ	08645	292681	...NEEDLE VALVE, IDLE A .....	1
15	XAFZZ	08645	23108	...BUSHING, SHAFT .....	1
16	XAFZZ	08645	93499	...SCREW, THROTTLE .....	1
17	XAFZZ	08645	221939	...VALVE, THROTTLE .....	1
18	XAFZZ	08645	391596	...SHAFT, THROTTLE .....	1
19	XAFZZ	08645	394681	..VALVE, INLET .....	1
20	PAFZZ	08645	99525	..VALVE ASSEMBLY, NEED .....	1
21	PAFZZ	08645	68667	..GASKET .....	1
22	PAFZZ	08645	394730	..NOZZLE .....	1
23	XAFZZ	08645	23123	..SCREW, CHOKE .....	1
24	XAFZZ	08645	26155	..SPRING, HELICAL, COMP .....	1
25	XAFZZ	80063	SCB69389-4	..WASHER, FLAT .....	1
26	XAFZZ	08645	230896	..PIN, SPECIAL .....	1
27	XAFZZ	08645	298514	..FLOAT, CARBURETOR .....	1
28	XAFZZ	08645	93499	..SCREW, CHOKE .....	1
29	XAFZZ	08645	391836	..VALVE, CHOKE .....	1
30	XAFZZ	08645	391583	..LEVER, CHOKE .....	1
31	XDFFF	08645	391829	..BODY AY, LOWER CARB .....	1
32	XDFZZ	08645	221747	...PLUG, BODY .....	1

END OF FIGURE

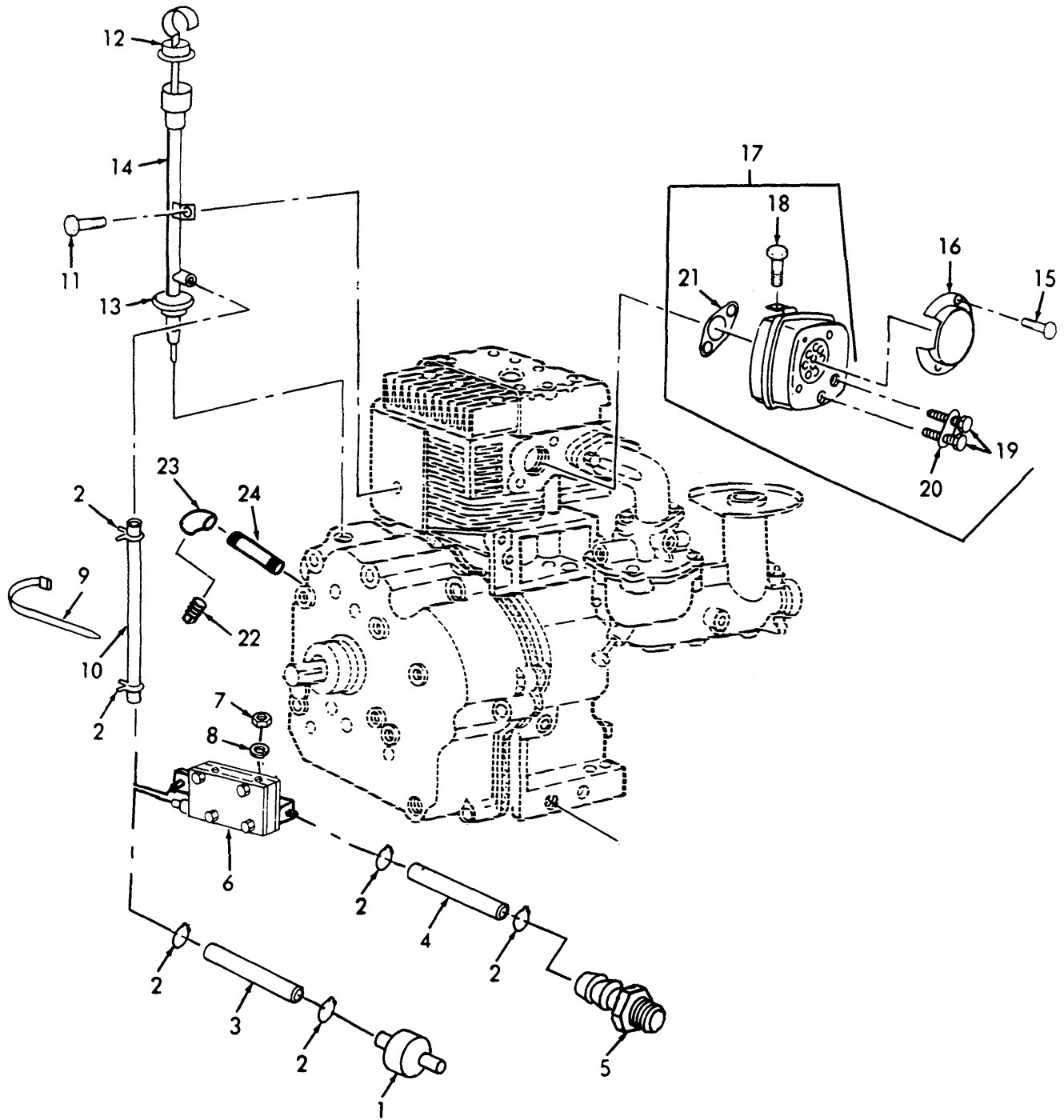


Figure 6. Fuel Pump, Oil Gage Rod, Tube, Drain, and Muffler.



## SECTION II

TM 5-4310-382-23P

(1) ITEM NO	(2) SMR CODE	(3) FSCM	(4) PART NUMBER	(5) DESCRIPTION AND USABLE ON CODES (UOC)	(6) QTY
GROUP 03 ENGINE ASSEMBLY					
FIG. 6 FUEL PUMP, OIL GAGE ROD, TUBE, DRAIN AND MUFFLER					
1	PAOZZ	08645	394358	.FILTER, FLUID FOR 1/4 ID FUEL HOSE.....	1
2	PAOZZ	08645	93053	.CLAMP, HOSE .....	6
3	PCOZZ	55921	OFC846A	.HOSE, GAS 1 3/4 IN. LG., 1/4 ID. X 1/2 OD.....	1
4	PCOZZ	55921	OFC846D	.HOSE, GAS 22 3/8 IN. LG., 1/4 ID. X..... 1/2 OD .....	1
5	PAOZZ	08645	230318	.ADAPTER, STRAIGHT, PI FOR 1/4..... IN. ID. HOSE ; 1/8 MALE NPT .....	1
6	PAOZZ	08645	390818	.PUMP, IMPULSE .....	1
7	PAOZZ	08645	231001	.NUT, PLAIN, HEXAGON .....	1
8	PAOZZ	99539	CBM21389	.WASHER, LOCK 1/4, SPLIT TYPE .....	1
9	PAOZZ	96906	MS3357-1	.CABLE TIE NYLON, 6.00IN LONG .....	1
10	PCOZZ	55921	OFC846C	.HOSE, GAS 20 IN LG., 1/4 ID. X 1/2..... OD.....	1
11	PAOZZ	08645	93394	.SCREW, ASSEMBLED WAS.....	1
12	PAOZZ	08645	392295	.CAP, FILLER OPENING .....	1
13	PAOZZ	08645	68838	.SEAL .....	1
14	XDOZZ	08645	392655	.TUBE, OIL FILTER .....	1
15	PAOZZ	08645	93705	.SCREW, ASSEMBLED WAS.....	4
16	PAOZZ	08645	393761	.DEFLECTOR, AIRFLOW .....	1
17	PAOZZ	08645	394170	.MUFFLER, EXHAUST .....	1
18	PAOZZ	08645	93559	..SCREW, ASSEMBLED WAS.....	1
19	PAOZZ	08645	93927	..SCREW, CAP, HEXAGON H.....	2
20	PAOZZ	08645	223016	..LOCKING PLATE, NUT A .....	1
21	PAOZZ	08645	270917	..GASKET.....	1
22	PAOZZ	96906	MS49005-6	.PLUG, PIPE 3/8 NPT, SQ. HD, STEEL, .....	1
23	PAOZZ	96906	14303-3BTU	SOLID .....	1
24	PAOZZ	96906	MS51953-18	.ELBOW 3/8 IN. X 45 DEGREE, BEADED .....	1
				ENDS, 150 M.I .....	
				.NIPPLE, PIPE 3/8 NPT X 7.00 LG, .....	1
				STEEL .....	

END OF FIGURE

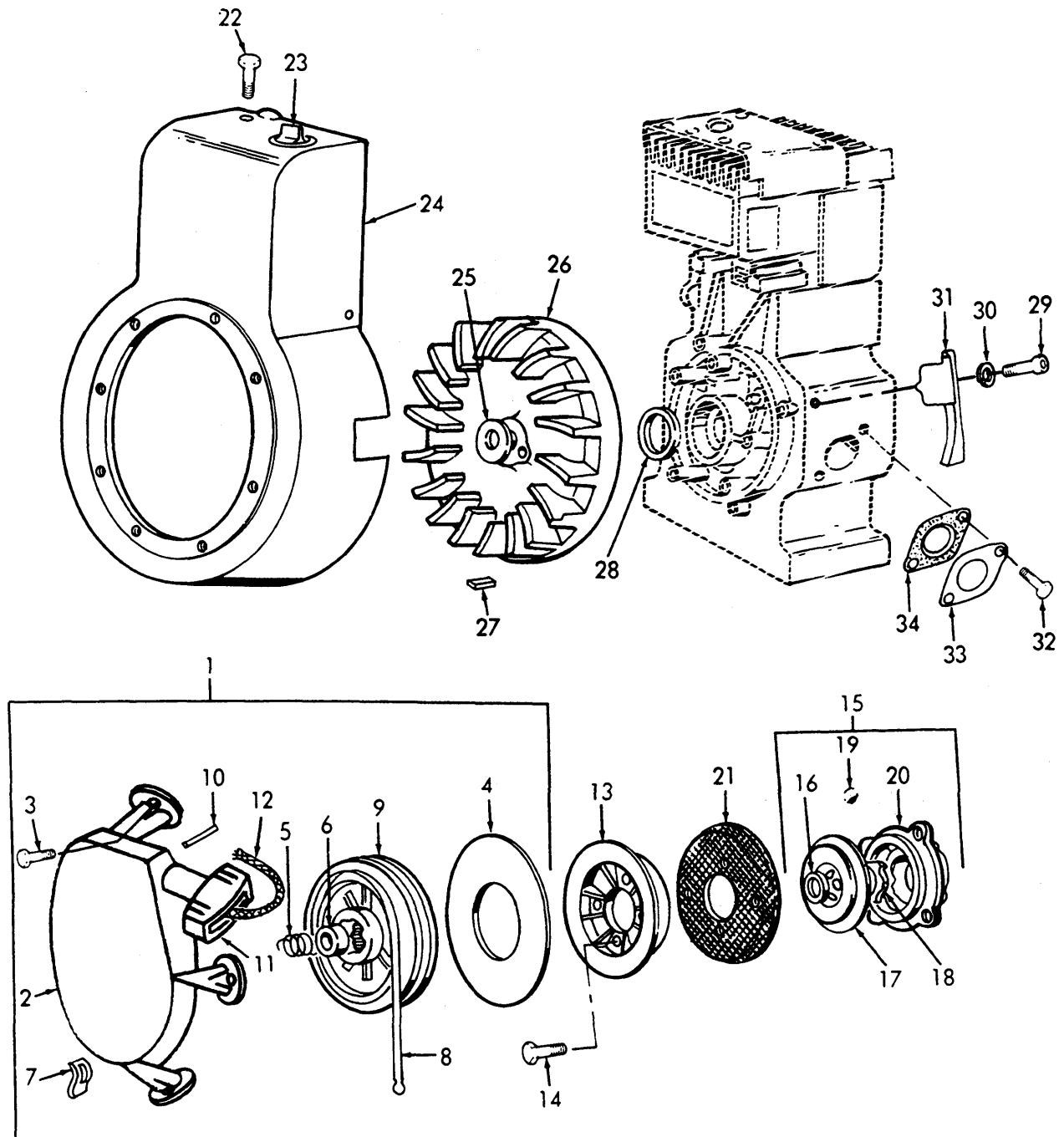


Figure 7. Starter, Clutch, and Blower Housing.

SECTION II

TM 5-4310-382-23P

(1) ITEM NO	(2) SMR CODE	(3) FSCM	(4) PART NUMBER	(5) DESCRIPTION AND USABLE ON CODES (UOC)	(6) QTY
GROUP 03 ENGINE ASSEMBLY					
FIG. 7 STARTER, CLUTCH, AND BLOWER HOUSING					
1	PAOZZ	08645	390391	..STARTER, ENGINE, HAND.....	1
2	XAOZZ	08645	393576	..HOUSING, STARTER .....	1
3	PAOZZ	08645	94063	...SCREW, CAP, HEXAGON H .....	4
4	XAOZZ	08645	490817	..SPACER .....	1
5	XAOZZ	08645	260414	..SPRING, RATCHET .....	1
6	XAOZZ	08645	230543	..ADAPTER, RATCHET .....	1
7	XAOZZ	08645	222598	..ANCHOR, SPRING.....	1
8	XAOZZ	08645	490179	..SPRING, REWIND START .....	1
9	XAOZZ	08645	295871	..PULLEY, FLAT .....	1
10	XAOZZ	08645	230228	..PIN, STRAIGHT, HEADLE .....	1
11	XAOZZ	08645	66728	..HANDLE, STARTING ROP.....	1
12	XAOZZ	08645	66884	..ROPE, STARTER.....	1
13	XBOZZ	08645	280457	PULLEY, STARTER .....	1
14	PAOZZ	08645	94062	..SCREW, ASSEMBLED WAS .....	4
15	PAOZZ	08645	394558	..CLUTCH ASSEMBLY, REW .....	1
16	XAOZZ	08645	68238	..WASHER, RATCHET .....	1
17	XAOZZ	08645	221653	..WASHER, RETAINER .....	1
18	XAOZZ	08645	298799	..RATCHET, CLUTCH .....	1
19	XAOZZ	78500	1428F58	..BALL, BEARING.....	6
20	XAOZZ	08645	394897	..HOUSING, CLUTCH .....	1
21	XDOZZ	08645	221796	..SCREEN, ROTATING .....	1
22	PAOZZ	96906	MS90725-3	..SCREW, CAP, HEXAGON H .....	4
23	PAOZZ	08645	396691	..SWITCH, ROTARY .....	1
24	XDOZZ	08645	398595	..HOUSING, BLOWER.....	1
25	PAOZZ	18876	10608076-5	..WASHER, FLAT .....	1
26	XDOZZ	08645	392157	..FLYWHEEL, MAGNETO .....	1
27	PAOZZ	08645	222698	..KEY, FLYWHEEL .....	1
28	PCOZZ	08645	391086	SEAL, PLAIN ENCASED .....	1
29	PAOZZ	08645	93712	..SCREW .....	1
30	PAOZZ	08645	93713	..WASHER, LOCK .....	1
31	XDOZZ	08645	223597	..GUARD, RING GEAR .....	1
32	XDOZZ	08645	94139	..SCREW, COVER .....	2
33	XDOZZ	08645	398194	..COVER, OIL HOLE .....	1
34	PAOZZ	08645	271736	..GASKET .....	1

END OF FIGURE

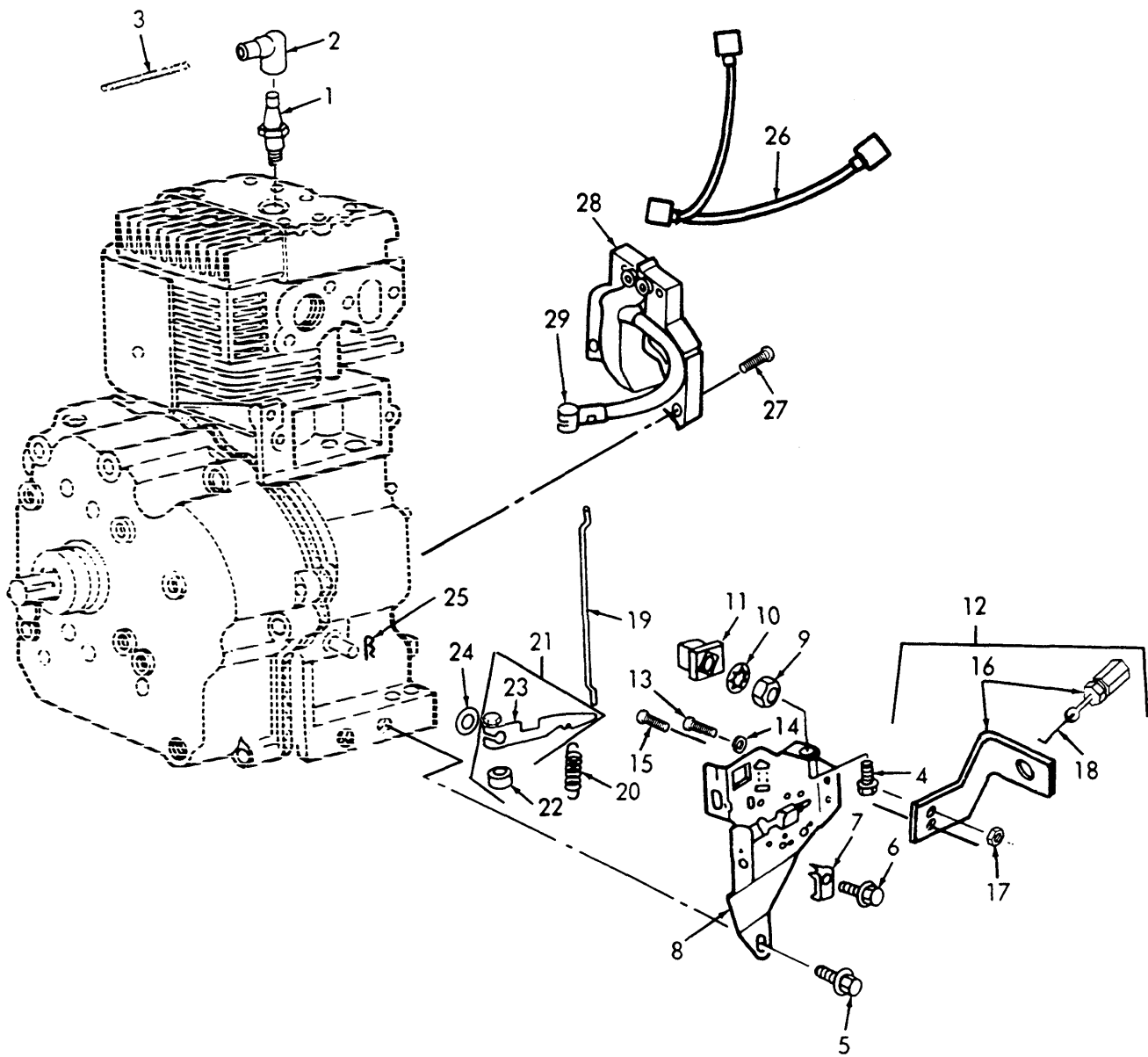


Figure 8. Ignition System, Governor Linkage, and Throttle Linkage.

## SECTION II

TM 5-4310-382-23P

(1) ITEM NO	(2) SMR CODE	(3) FSCM	(4) PART NUMBER	(5) DESCRIPTION AND USABLE ON CODES (UOC)	(6) QTY
GROUP 03 ENGINE ASSEMBLY					
FIG. 8 IGNITION SYSTEM, GOVERNOR LINKAGE, AND THROTTLE LINKAGE					
1	PAOZZ	11583	RJ8C	.SPARK PLUG .....	1
2	PAOZZ	08645	392273	ELBOW, RF SUPPRESSOR.....	1
3	PAOZZ	08645	291508	.SHIELDING ASSY, IGNI .....	1
4	PAOZZ	96906	MS90725-3	.SCREW, CAP, HEXAGON H .....	1
5	PAOZZ	08645	93535	.SCREW .....	1
6	PAOZZ	08645	93496	.SCREW, MACHINE.....	1
7	PAOZZ	08645	221535	.CLAMP, CASING.....	1
8	PAOZZ	08645	399152	.PLATE, GOV CONTROL .....	1
9	PAOZZ	08645	90576	.NUT, PLAIN, HEXAGON .....	1
10	PAOZZ	08645	92791	.WASHER, LOCK .....	1
11	PAOZZ	08645	398525	.INSULATOR AY .....	1
12	PAOZZ	55921	CBB-918	.SLOW DOWN DEVICE.....	1
13	XAOZZ	55921	CBB918-B	.SCREW, HEX HD 10-32 X 5/16 LG , CAN NOT PURCHASE SEPERATELY .....	1
14	XAOZZ	55921	CBB918-D	.WASHER, LOCK #10 .....	1
15	XAOZZ	55921	CBB918-C	.SCREW, HX HD 10-32 X 1/4 IN LG .....	1
16	XAOZZ	55921	CBB918-A	.BRACKET & SLOW DVCE INCLUDES BRACKET & SLOW DOWN DEVICE .....	1
17	XAFZZ	55921	CBB918-E	.NUT, HEX #10 X 32 .....	1
18	XAFZZ	55921	CBB918-F	.CONTROL WIRE .....	1
19	PAOZZ	08645	261236	.LINK, GOVERNOR CONTR .....	1
20	PAOZZ	08645	260695	.SPRING, HELICAL, EXTE .....	1
21	PAOZZ	08645	396775	.LEVER AY, GOVERNOR .....	1
22	XAOZZ	08645	231082	..NUT, HEX .....	1
23	XAOZZ	08645	92613	..BOLT .....	1
24	PAOZZ	08645	222450	.WASHER, FLAT .....	1
25	PAOZZ	08645	93306	.PIN, LOCK .....	1
26	PAOZZ	08645	398874	.WIRE, GROUND .....	1
27	PAOZZ	08645	93381	SCREW, ASSEMBLED WAS .....	2
28	PAOZZ	08645	398265	COIL, MAGNETO .....	1
UOC:EDA					
29	PAOZZ	08645	221798	.CABLE .....	1

END OF FIGURE

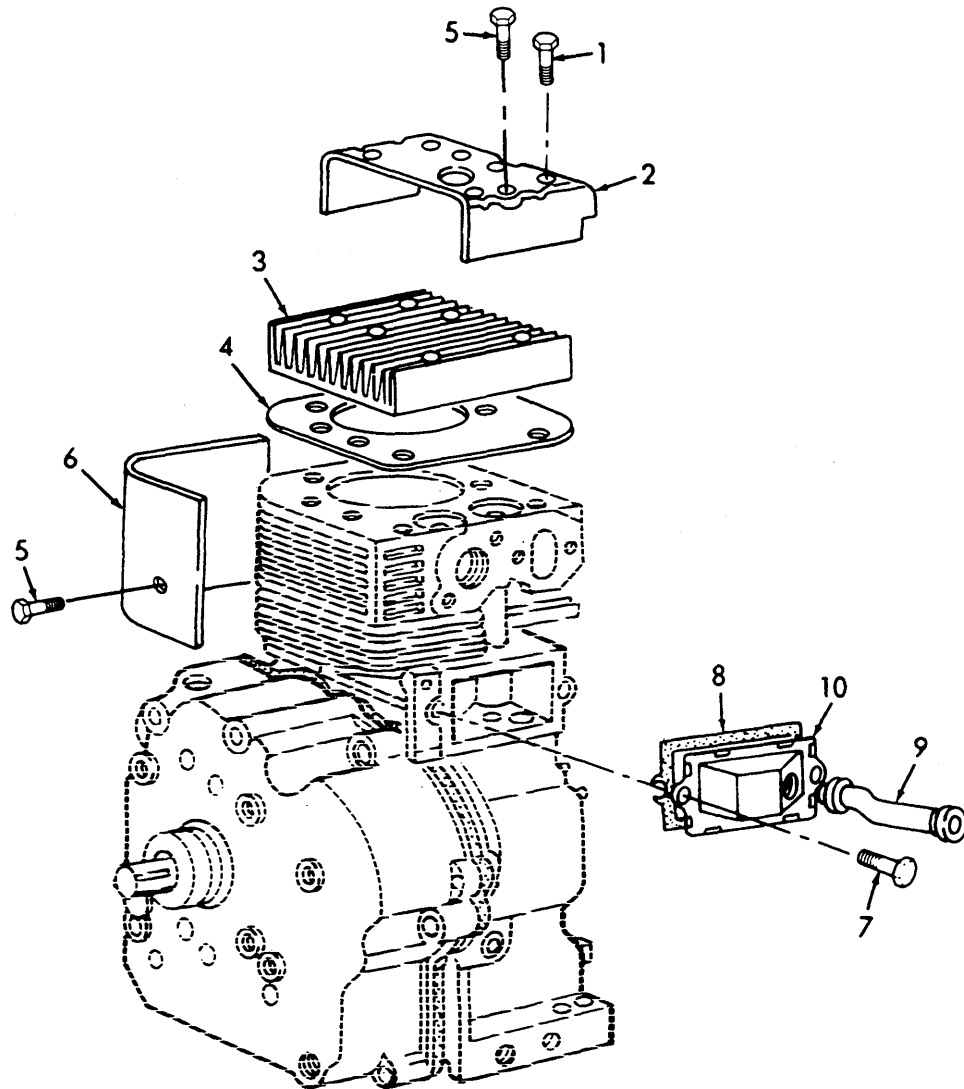


Figure 9. Cylinder Head

**SECTION II**

**TM 5-4310-382-23P**

(1) ITEM NO	(2) SMR CODE	(3) FSCM	(4) PART NUMBER	(5) DESCRIPTION AND USABLE ON CODES (UOC)	(6) QTY
GROUP 03 ENGINE ASSEMBLY					
FIG. 9 CYLINDER HEAD					
1	PAOZZ	08645	93723	.SCREW .....	9
2	XDOZZ	08645	222725	.COVER, CYLINDER HEAD .....	1
3	XDOZZ	08645	212366	.HEAD, CYLINDER.....	1
4	PAOZZ	08645	271075	.GASKET .....	1
5	PAOZZ	08645	93394	.SCREW, ASSEMBLED WAS.....	1
6	XDOZZ	08645	222744	.SHEILD, CYLINDER .....	1
7	PAOZZ	08645	93394	.SCREW, ASSEMBLED WAS.....	2
8	PAOZZ	08645	27803	.GASKET .....	1
9	XDOZZ	08645	280112	.TUBE, BREATH ER.....	1
10	XDOZZ	08645	391575	.BREATHER .....	1

END OF FIGURE

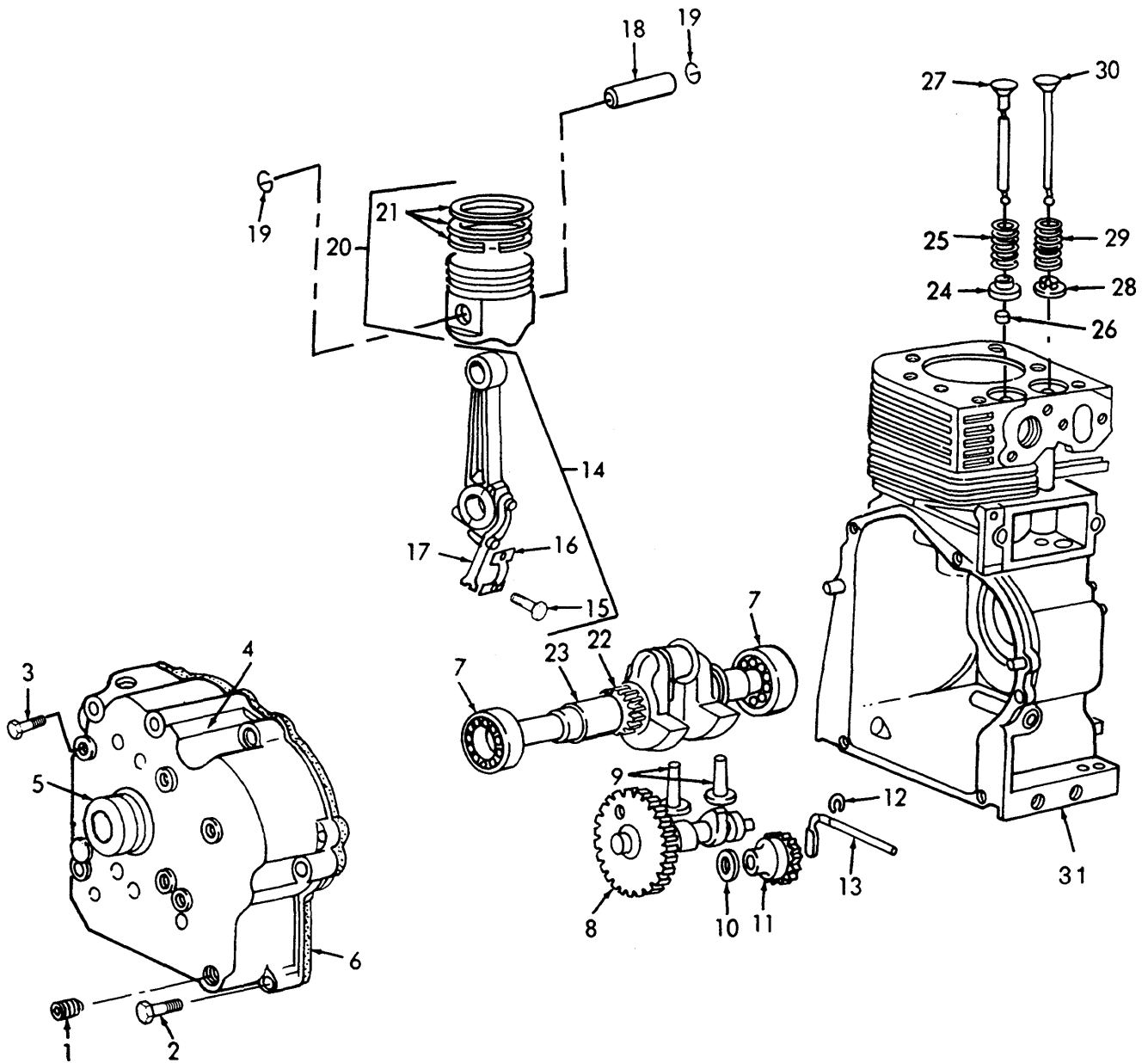


Figure 10. Engine Assembly.



## SECTION II

TM 5-4310-382-23P

(1) ITEM NO	(2) SMR CODE	(3) FSCM	(4) PART NUMBER	(5) DESCRIPTION AND USABLE ON CODES (UOC)	(6) QTY
GROUP 03 ENGINE ASSEMBLY					
FIG. 10 ENGINE ASSEMBLY					
1	PAOZZ	08645	93418	.PLUG, PIPE.....	1
2	XAFZZ	08645	93585	.SCREW, CRANKCASE .....	4
3	XAFZZ	08645	93764	.SCREW, CRANKCASE .....	2
4	XAFZZ	08645	393893	.COVER AY, CRANKCASE .....	1
5	XAFZZ	08645	291675	..SEAL, PLAIN ENCASED .....	1
6	XAFZZ	08645	270856	..GASKET, CRANKCASE .....	1
7	XAFZZ	08645	291667	.BEARING, BALL, ANNULA .....	1
8	XAFZZ	08645	212296	.GEAR, CAM .....	1
9	XAFZZ	08645	261183	.TAPPET, ENGINE POPPE .....	2
10	XAFZZ	08645	221551	.WASHER, THRUST.....	1
11	XAFZZ	08645	391737	.GEAR, SPUR . .....	1
12	XAFZZ	08645	93307	.RETAINER, E-RING .....	1
13	XAFZZ	08645	231057	.CRANK, GOVERNOR .....	1
14	XAFZZ	08645	393860	.ROD ASSEMBLY CONNEC .....	1
15	XAFZZ	08645	92909	..SCREW, CONNECT ROD .....	2
16	XAFZZ	08645	222299	..LOCK CONNECTING .....	2
17	XAFZZ	08645	222329	..DIPPER, CONNECTING R .....	1
18	XAFZZ	08645	299691	.PIN, PISTON .....	1
19	XAFZZ	08645	260924	.RING, RETAINING .....	2
20	XAFZF	08645	394661	.PISTON ASSEMBLY .....	1
21	XAFZZ	08645	394665	..RING SET, PISTON.....	1
22	XAFZZ	08645	262135	.GEAR, TIMING .....	1
23	XAFZZ	08645	399700	.CRANKSHAFT .....	1
24	XAFZZ	08645	292260	.ROTOCAP, EXHAUST VAL .....	1
25	XAFZZ	08645	26828	.SPRING, HELICAL, COMP .....	1
26	XAFZZ	08645	93630	.LOCK, VALVE SPRING R .....	1
27	XAFZZ	08645	261185	.VALVE, POPPET, ENGINE .....	1
28	XAFZZ	08645	221596	.RETAINER, HELICAL CO.....	1
29	XAFZZ	08645	65906	SPRING, HELICAL, COM P.....	1
UOC:EDA					
30	XAFZZ	08645	261462	.VALVE, FLOW CONTROL .....	1
31	XAFZZ	08645	394656	.CYLINDER ASSEMBLY.....	1

END OF FIGURE

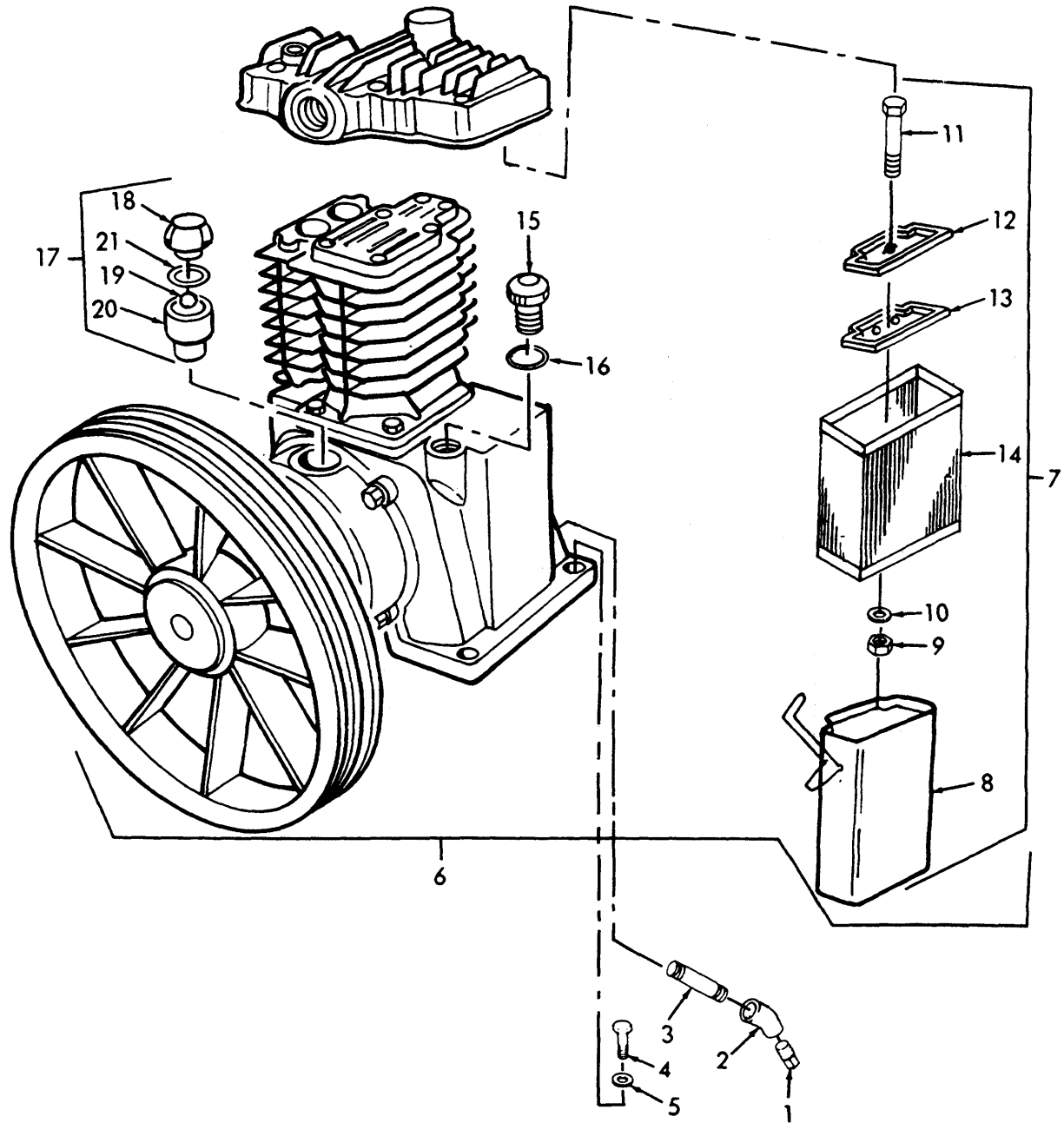


Figure 11. Air Cleaner Assembly, Oil Filler Cap, Plug, and Drain.

SECTION II

TM 5-4310-382-23P

(1) ITEM NO	(2) SMR CODE	(3) FSCM	(4) PART NUMBER	(5) DESCRIPTION AND USABLE ON CODES (UOC)	(6) QTY
GROUP 04 COMPRESSOR ASSEMBLY					
FIG. 11 AIR CLEANER ASSEMBLY, OIL FILLER CAP, PLUG, AND DRAIN					
1	PAOZZ	96906	MS49005-6	PLUG, PIPE 3/8 NPT, SQ. HD, STEEL .....	1
2	PAOZZ	96906	MS51845-3	ELBOW 3/8 NPT X 90 DEGREES.....	1
3	PAOZZ	96906	MS51953-52	NIPPLE, PIPE 1/2 NPT X 1-1/2 LG, .....	1
4	PAOZZ	96906	MS90728-62	STEEL .....	4
5	PAOZZ	96906	MS35338-46	SCREW, CAP, HEXAGON H 3/8-16 X 1 1/4 .....	4
6	PBOFF	55921	70153-00000	IN. LG., STEEL.....	4
7	XDOOO	55921	70153-66001	WASHER 3/8 IN., STEEL .....	1
8	XDOZZ	55921	70153-66011	COMPRESSOR ASSEMBLY MODEL B-2 .....	1
9	PAOZZ	55921	92517-230600	AIR STRAINER .....	1
10	PAOZZ	55921	92521-170600	BODY ASSEMBLY .....	1
11	PAOZZ	55921	70153-66160	LOCKNUT SIZE M6 X 1.0; STEEL.....	1
12	PAOZZ	55921	70153-66132	..WASHER SIZE 6MM; BRASS.....	1
13	XDOZZ	55921	70153-66120	..BOLT 6M X 1.0 X 140 LG.; STEEL .....	1
14	PAOZZ	55921	70153-66142	..GASKET .....	1
15	PAOZZ	55921	70123-57190	..COVER .....	1
16	PAOZZ	96906	MS9241-116	..FILTER .....	1
17	PAOZZ	55921	70124-57600	..CAP, OIL CRANKCASE .....	1
18	XAOZZ	55921	70124-57610	..PACKING, PREFORMED 2.44MM.THK. X.....	1
19	XAOZZ	55921	93601-890700	18MM.ID.; NITRILE N.B.R .....	1
20	XAOZZ	55921	70124-57670	..BREATHER ASSEMBLY .....	1
21	PAOZZ	96906	MS9241-117	..CAP, BREATHER.....	1
				..GLASS BALL.....	1
				..BODY, BREATHER .....	1
				..PACKING, PREFORMED 2.51MM.THK. X.....	1
				20MM.ID.; NITRILE N.B.R .....	1

END OF FIGURE

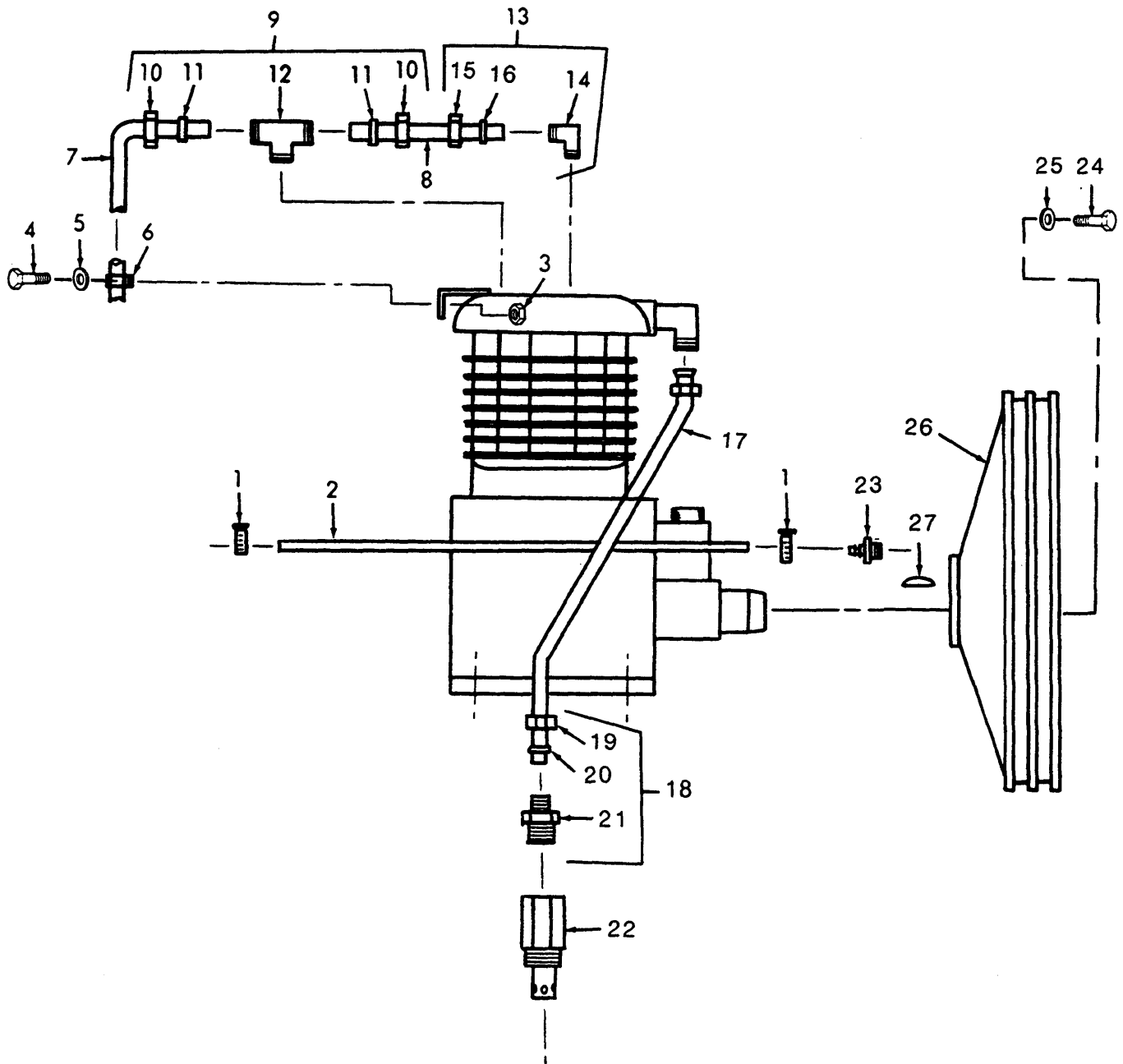


Figure 12. Tube Assemblies, Engine Speed Control, Fan and Pulley.

## SECTION II

TM 5-4310-382-23P

(1) ITEM NO	(2) SMR CODE	(3) FSCM	(4) PART NUMBER	(5) DESCRIPTION AND USABLE ON CODES (UOC)	(6) QTY
GROUP 04 COMPRESSOR ASSEMBLY					
FIG. 12 TUBE ASSEMBLIES, ENGINE SPEED CONTROL, FAN AND PULLEY					
1	PAOZZ	96906	MS3582-10	.CLAMP, HOSE FOR 1/2 IN OD HOSE;.....	2
2	PCOZZ	55921	OFC840	WORM SCREW, STAINLS STL .....	1
3	PAOZZ	96906	MS35650-504	.HOSE RUBBER, 250 PSI, 1/4 ID X 1/2 .....	1
4	PAOZZ	96906	MS35207-263	OD X 10 1/4 IN. LG .....	1
5	PAOZZ	96906	MS51848-29	.NUT #10-32, STEEL .....	2
6	PAOZZ	75272	CWV-0507-1	.SCREW, MACHINE 10-32 NF X 1/2 IN .....	2
7	PAOZZ	55921	OFC841	LG, STEEL .....	2
8	PAOZZ	55921	OFC851	.WASHER, LOCK NO. 10, STEEL .....	2
9	PAOZZ	55921	VA787	.CLIP, TUBING .....	2
10	XAOZZ	55921	79922-150102	.TUBING COPPER TUBING, 1/4 IN. OD X .....	1
11	XAOZZ	55921	79921-150202	39 1/2 IN. LG .....	1
12	XAOZZ	55921	79927-15101	.TUBING COPPER TUBE, 1/4 IN OD X 4 .....	1
13	PAOZZ	55921	VA786	3/8 IN LG .....	1
14	XAOZZ	55921	79926-150101	.TEE, COMPRESSION 1/8-28 BSP X 1/4 .....	1
15	XAOZZ	55921	79922-150102	OD TUBE, BRASS, WITH NUTS AND SLEEVES .....	3
16	XAOZZ	55921	79921-150202	..NUT FOR 1/4 TUBE FITTING .....	3
17	PAOZZ	55921	OFC839	..SLEEVE FOR 1/4 TUBING FITTING .....	3
18	PBOZZ	70411	68A-14E	..TEE 1/8-28 BSP SIDE, 1/4 IN. OD. ....	1
19	XAOZZ	55921	179922-150102	TUBE ENDS .....	1
20	XAOZZ	70411	60A-14	.ELBOW ASSEMBLY 1/8-28 BSP X 1/4 .....	1
21	XAOZZ	70411	B68A-14E	OD. TUBE, BRASS; WITH NUT AND SLEEVE .....	1
22	PAOZZ	58818	P7575S	..ELBOW 1/8 BSP X 1/4 TUBE, BRASS .....	1
23	PAOZZ	08645	230318	..NUT .....	1
24	PAOZZ	55921	91501-1308030	..SLEEVE .....	1
25	PAOZZ	55921	70123-76210	.TUBE, DISCHARGE 7/8 IN. OD X 31 1/16 .....	1
26	XDOZZ	55921	70153-76010-4024	IN LG., COPPER .....	1
27	PAOZZ	55921	70153-56060	.FITTING 3/4 NPT X 7/8 IN. OD. TUBE, .....	1
				BRASS; WITH NUT AND SLEEVE .....	1
				NUT .....	1
				SLEEVE .....	1
				UOC: EDA	
				NIPPLE .....	1
				UOC: EDA	
				.CHECK VALVE 3/4 IN. FPT INLET X 3/4 .....	1
				IN. MPT OUTLET W/O SIDE PORT, STEEL .....	1
				.ADAPTER, STRAIGHT, PI FOR 1/4 .....	1
				IN. ID. HOSE, 1/8 MALE NPT .....	1
				.BOLT, V-PULLEY M10 X 1.5 X 30 LG., .....	1
				STEEL, GRADE 5 .....	1
				.WASHER, THRUST SPECIAL WASHER .....	1
				.V-PULLEY .....	1
				KEY WOODRUFF .....	1

END OF FIGURE

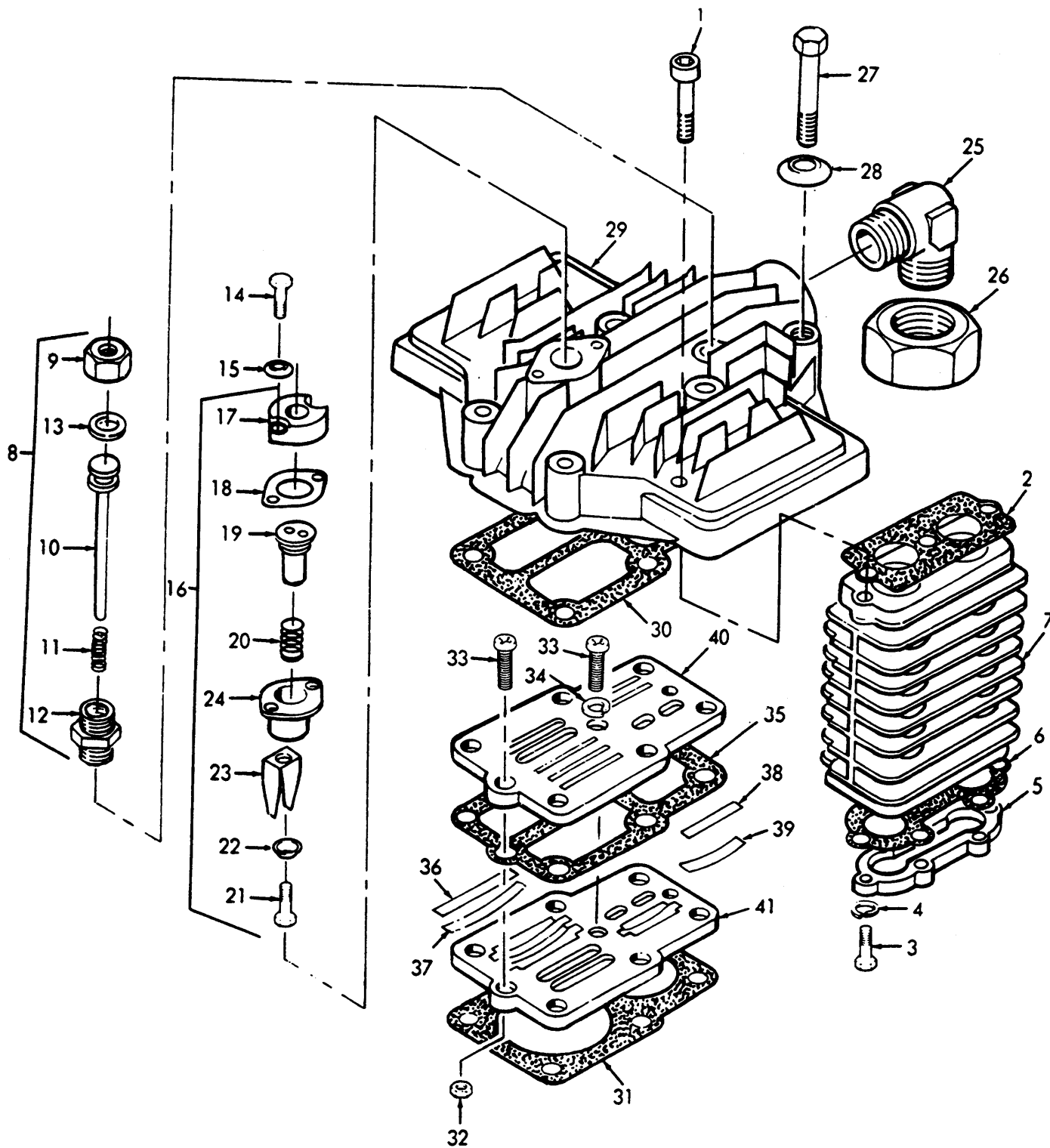


Figure 13. Valves; Intake and Exhaust, and Cylinder Head.

## SECTION II

TM 5-4310-382-23P

(1) ITEM NO	(2) SMR CODE	(3) FSCM	(4) PART NUMBER	(5) DESCRIPTION AND USABLE ON CODES (UOC)	(6) QTY
GROUP 04 COMPRESSOR ASSEMBLY					
FIG. 13 VALVES; INTAKE AND EXHAUST, AND CYLINDER HEAD					
1	PAFZZ	55921	91521-1308060	.CAP SCREW SOCKET HEAD; M8 X 1.25 ..... X 50, STEEL, GRADE 5.8 .....	2
2	PAFZZ	55921	70153-71180	.PACKING INTERCOOLER-HEAD .....	1
3	PAFZZ	55921	91501-1306015	.CAP SCREW HEX. HD.; MS6 X 1 X 15..... LG., STEEL, GRADE 5.8 .....	6
4	PAFZZ	55921	92522-130600	.WASHER, SPRING M6, STEEL .....	6
5	XDFZZ	55921	70153-71161	.COVER INTERCOOLER .....	1
6	PAFZZ	55921	70153-71171	.PACKING .....	1
7	XDFZZ	55921	70153-71111	.BODY INTERCOOLER. ....	1
8	PAFFF	55921	70153-12200	.AUTO UNLOADER .....	1
9	XAFZZ	55921	70103-11270	..COVER, VALVE AUTO UNLOADER.....	1
10	XAFZZ	55921	70153-12220	..PISTON AUTO UNLOADER .....	1
11	XAFZZ	55921	70103-11230	..SPRING AUTO UNLOADER.....	1
12	XAFZZ	55921	70103-11210	..CYLINDER AUTO UNLOADER .....	1
13	XAFZZ	96906	MS9388-012	..O-RING .....	1
14	PAFZZ	55921	91521-1306025	.CAP SCREW HEX. HD. M6 X 1 X 25 LG., ..... STEEL, GRADE 5.8.....	2
15	PAFZZ	55921	92522-130600	.WASHER, SPRING .....	2
16	PAFFF	55921	70153-11200	.AUTO UNLOAD ER.....	1
17	XAFZZ	55921	70153-11270	..COVER, UPPER.....	1
18	XAFZZ	55921	70153-11280	..PACKING, COVER .1 .....	1
19	XAFZZ	55921	70153-11220	..PISTON .....	1
20	XAFZZ	55921	70153-11230	..SPRING .....	1
21	XAFZZ	55921	91501-1306015	..SCREW M6 X 1 X 15 LG, STEEL, GR ..... 5.8 .....	1
22	XAFZZ	55921	92522-130600	..WASHER, SPRING .....	1
23	XAFZZ	55921	70153-31080	..FORK .....	1
24	XAFZZ	55921	70153-11210	..CYLINDER .....	1
25	PAFZZ	55921	70124-87010	.JOINT .....	1
26	PAFZZ	55921	79922-130707	.NUT .....	1
27	PAFZZ	55921	91501-1310090	.BOLT, CYLINDER HEAD M10 X 1.5 X 90..... LG, STEEL, GRADE 5.8 .....	6
28	PAFZZ	55921	92522-131000	.WASHER, SPRING M10, STEEL .....	6
29	XDFZZ	55921	70153-11011	.CYLINDER HEAD .....	1
30	PAFZZ	55921	70153-11021	.PACKING, CYL HEAD.....	1
31	PAFZZ	55921	70153-11030	.PACKING, VALVE SEAT .....	1
32	PAFZZ	55921	92501-230500	.NUT M5 X 0.8, STEEL .....	2
33	PAFZZ	55921	91507-1305012	.BOLT, VALVE SEAT M5 X 0.8 X 12 LG, ..... STEEL .....	3
34	PAOZZ	55921	92522-130500	.LOCKWASHER .....	1
35	PAFZZ	55921	70153-31120	.PACKING, VALVE SEAT .....	1
36	XDFZZ	55921	70153-31031	.VALVE PLATE INLET & OUTLET, FIRST ..... STAGE .....	8
37	XDFZZ	55921	70153-31071	.SPRING, VALVE PLATE FIRST STAGE .....	8
38	XDFZZ	55921	70153-32031	.VALVE PLATE SECOND STAGE .....	1

**SECTION II**

**TM 5-4310-382-23P**

(1) ITEM NO	(2) SMR CODE	(3) FSCM	(4) PART NUMBER	(5) DESCRIPTION AND USABLE ON CODES (UOC)	(6) QTY
39	XDFZZ	55921	70153-32071	.SPRING, VALVE PLATE SECOND STAGE.....	1
40	XDFZZ	55921	70153-31011	.SEAT, VALVE UPPER.....	1
41	XDFZZ	55921	70153-31021	.SEAT, VALVE LOWER .....	1

END OF FIGURE



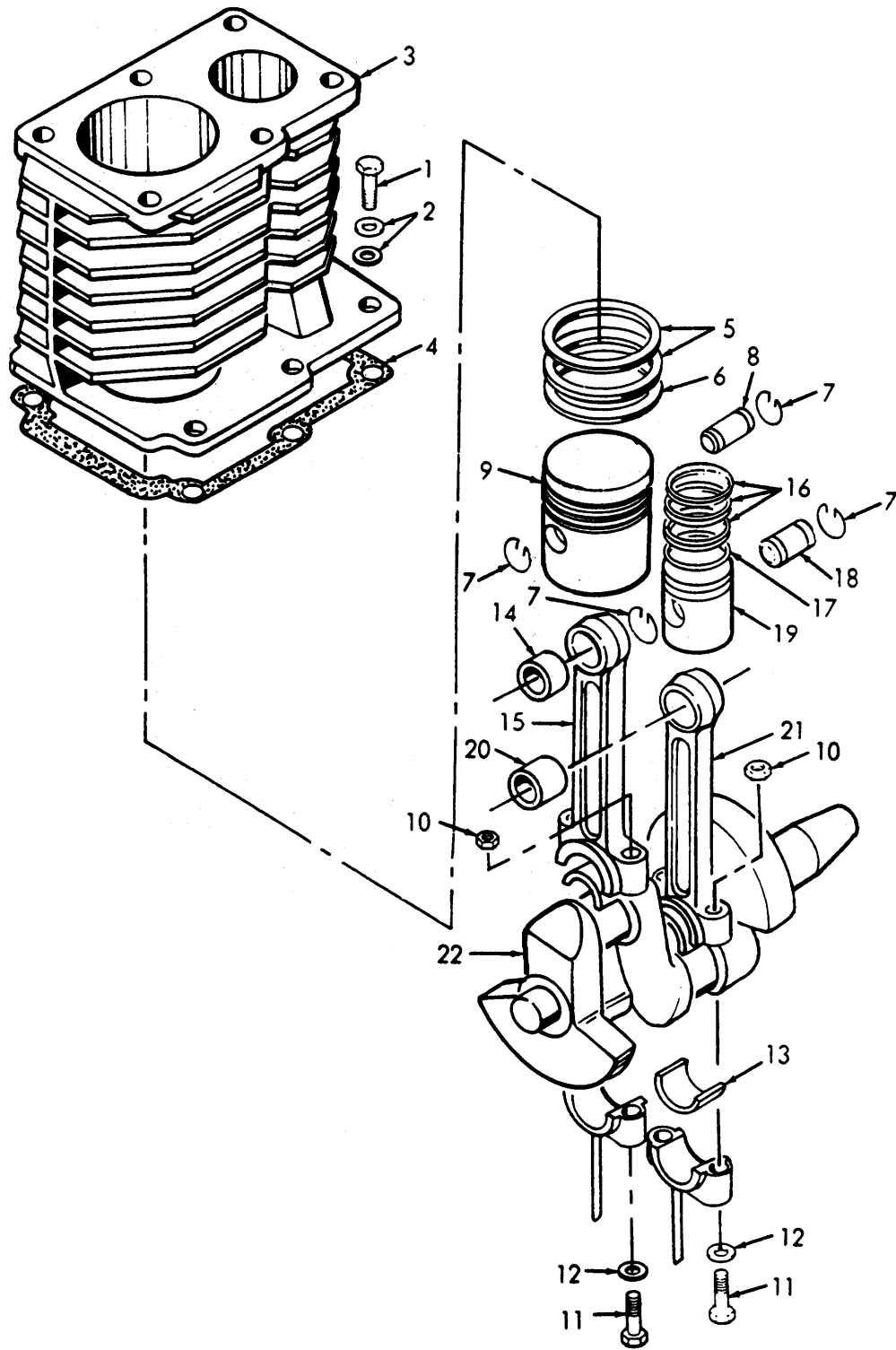


Figure 14. Piston and Connecting Rods.

SECTION II

TM 5-4310-382-23P

(1) ITEM NO	(2) SMR CODE	(3) FSCM	(4) PART NUMBER	(5) DESCRIPTION AND USABLE ON CODES (UOC)	(6) QTY
GROUP 04 COMPRESSOR ASSEMBLY					
FIG. 14 PISTON AND CONNECTING RODS					
1	PAFZZ	55921	915011310030	.BOLT HEX. HD., M10 X 1.5 X 30 LG., ..... STEEL, GRADE 5 .....	6
2	PAFZZ	55921	92521-171000	.WASHER, PLAIN 10.5MM.ID. X..... 17MM.OD. X 7MM.THK., ALUM.....	12
3	XDFZZ	55921	70153-51011	.CYLINDER .....	1
4	PAFZZ	55921	70153-51031	.PACKING CYLINDER-CRANKCASE .....	1
5	PAFZZ	55921	70124-61030	.RING, COMP, 1ST STAGE.....	2
6	PAFZZ	55921	70124-61050	.RING, OIL CONT, 1ST.....	1
7	PAFZZ	96906	MS13962-1	.RING, RETAINING PISTON PIN.....	4
8	PAFZZ	55921	70153-61121	.PIN, PISTON, 1ST STG.....	1
9	XDFZZ	55921	70153-61011	.PISTON, 1ST STAGE.....	1
10	PAFZZ	55921	92501-130800	.NUT M8 X 1.25, STEEL, GRADE 5 .....	4
11	PAFZZ	55921	70153-61250	.BOLT, CONNECTING ROD SPECIAL .....	4
12	PAFZZ	55921	92522-130800	.WASHER, SPRING M8, STEEL .....	4
13	PAFZZ	55921	70153-61090	.BEARING, CRANKSHAFT BEARING HALF .....	4
14	PAFZZ	55921	70153-61081	.BUSHING, CONN ROD FIRST STAGE .....	1
15	XDFZZ	55921	70153-61211	.CONN ROD AY, 1ST STG .....	1
16	PAFZZ	55921	70153-62030	.RING, COMPR, 2ND STG .....	3
17	PAFZZ	55921	70153-62050	.RING, OIL CONT, 2ND SECOND STAGE .....	1
18	PAFZZ	55921	70153-62121	.PIN, PISTON, 2ND STG .....	1
19	XDFZZ	55921	70153-62011	.PISTON, 2ND STAGE .....	1
20	PAFZZ	55921	70153-62081	.BUSHING, CONNECT ROD SECOND STAGE.....	1
21	XDFZZ	55921	70153-62211	.CONN ROD AY, 2ND STG .....	1
22	XDFZZ	55921	70153-56011	.CRANKSHAFT .....	1

END OF FIGURE

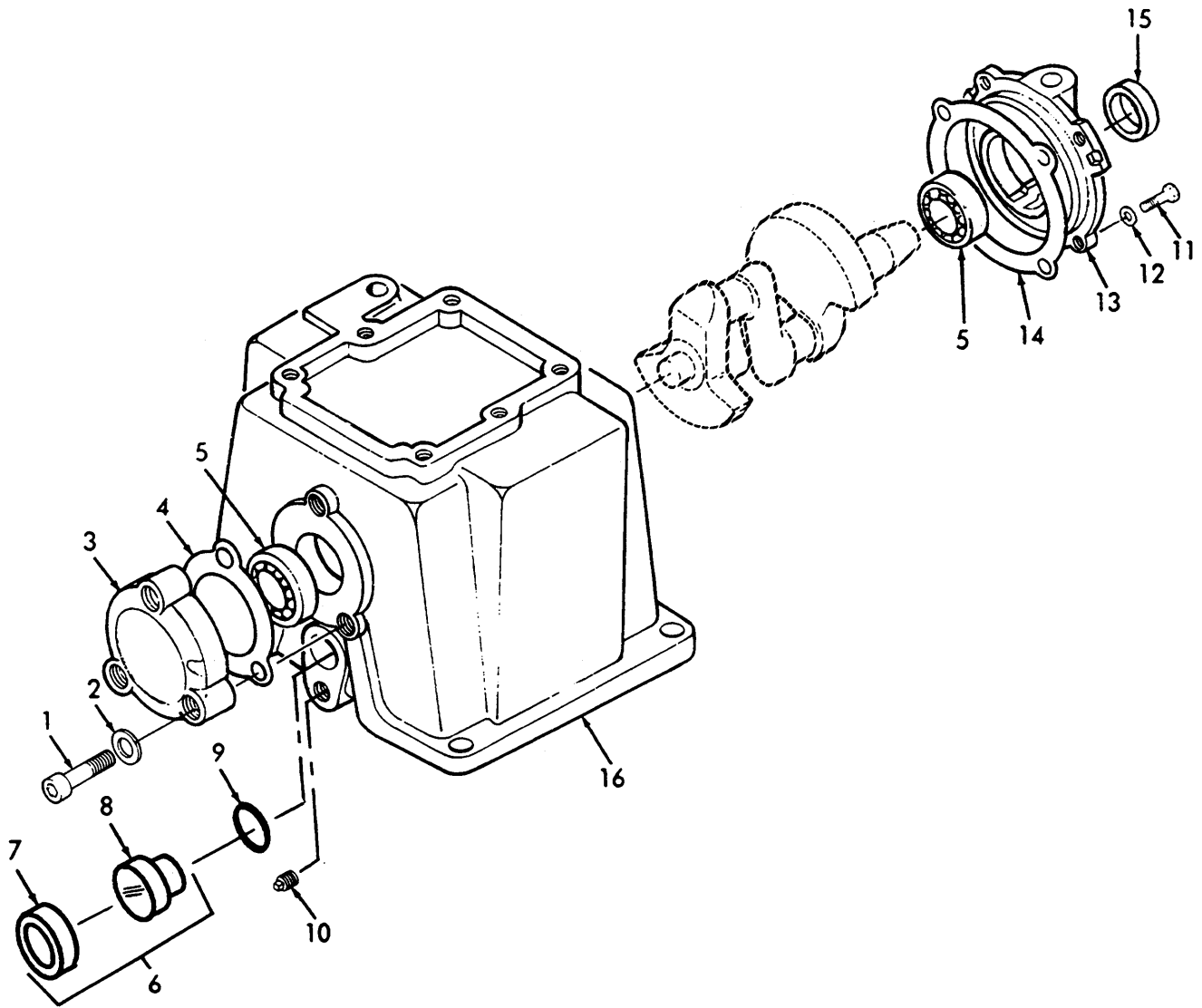


Figure 15. Crankshaft, Bearings, Seals, and Cylinder Block.

SECTION II

TM 5-4310-382-23P

(1) ITEM NO	(2) SMR CODE	(3) FSCM	(4) PART NUMBER	(5) DESCRIPTION AND USABLE ON CODES (UOC)	(6) QTY
GROUP 04 COMPRESSOR ASSEMBLY					
FIG. 15 CRANKSHAFT, BEARINGS, SEALS, AND CYLINDER BLOCK					
1	PAFZZ	55921	91521-1310030	.BOLT M10 X 1.5 X 30 LG, STEEL, GR 5.8.....	3
2	PAFZZ	55921	92522-131000	.WASHER, SPRING M10, STEEL.....	3
3	XDFZZ	55921	70153-57061	.COVER, REAR BEARING .....	1
4	PAFZZ	55921	70153-57071	.PACKING REAR BEARING COVER.....	1
5	PAFZZ	23043	6206	.BEARING, BALL, ANNULA.....	2
6	XDFZZ	55921	70111-57700	.COVER ASSY, OIL GAG E.....	1
7	XAFZZ	55921	70111-57720	..SHELL .....	1
8	XAFZZ	55921	70111-57711	..GAGE, OIL LEVEL.....	1
9	XAFZZ	55921	70111-57730	.SEAL OIL LEVEL GAGE .....	1
10	PAFZZ	96906	MS49005-6	.PLUG, PIPE 3/8 NPT, SQ. HD, STEEL, SOLID .....	1
11	PAFZZ	55921	915011310030	.BOLT HEX. HD., M10 X 1.5 X 30LG., STEEL, GRADE 5.....	4
12	PAFZZ	55921	92522-131000	.WASHER, SPRING M10, STEEL.....	4
13	XDFZZ	55921	70153-57030	.COVER, FRONT BEARING .....	1
14	PAFZZ	55921	70153-57040	.PACKING, COVER FRONT BEARING .....	1
15	PAFZZ	80201	CRWA1	.SEAL, PLAIN .....	1
16	XDFZZ	55921	70153-57011	.CRANKCASE .....	1

END OF FIGURE

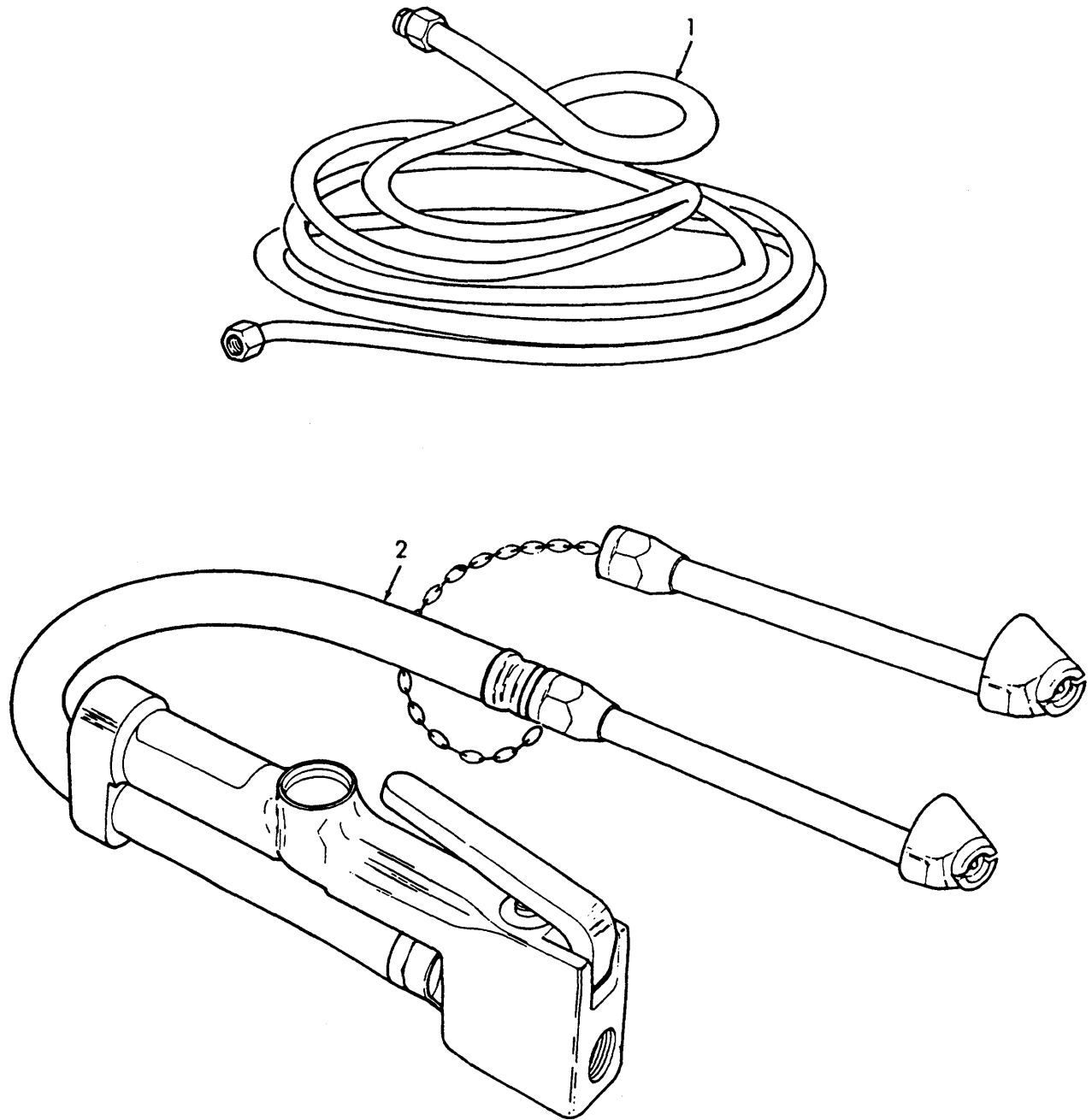


Figure 16. Hose and Inflator Gage.

**SECTION II**

**TM 5-4310-382-23P**

(1) ITEM NO	(2) SMR CODE	(3) FSCM	(4) PART NUMBER	(5) DESCRIPTION AND USABLE ON CODES (UOC)	(6) QTY
GROUP 05 AIR DISCHARGE SYSTEM					
FIG. 16 HOSE AND INFLATOR GAGE					
1	PAOZZ	55921	VR318	.HOSE ASSEMBLY, NONME 5/16 IN. ID. X..... 50 FT. LG., 200 PSIG, W/1/4 IN. STD. STR. PIPE THD. SWIVEL FITTING ONE END, 1/4 IN. NPT OTHER END .....	1
2	PAOZZ	94894	GIJ-J2-1506	GAGE .....	1

END OF FIGURE

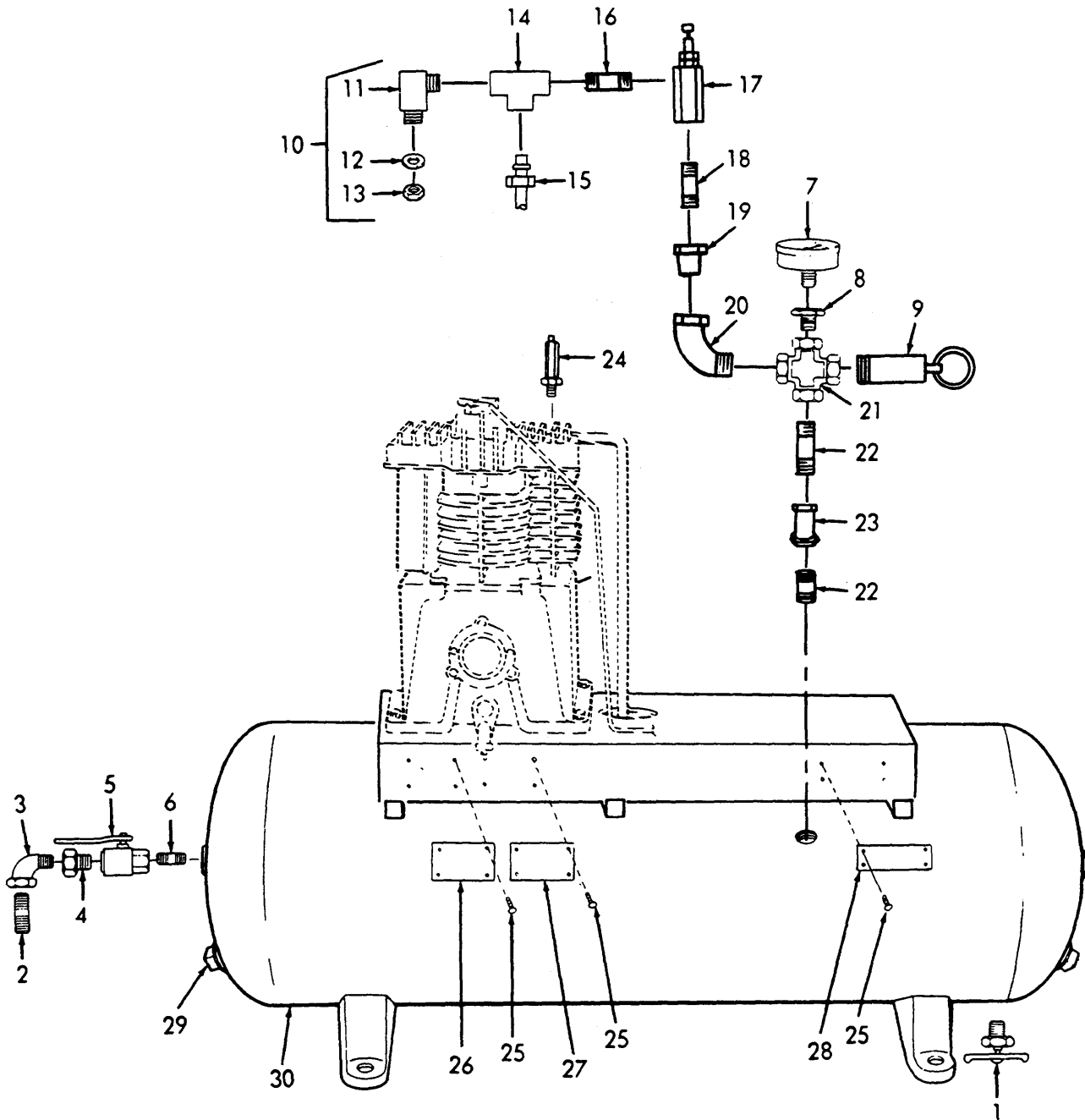


Figure 17. Relief Valves, Air Gage, Drain Cock, Air Valve (Tank), and Air Tank.

## SECTION II

TM 5-4310-382-23P

(1) ITEM NO	(2) SMR CODE	(3) FSCM	(4) PART NUMBER	(5) DESCRIPTION AND USABLE ON CODES (UOC)	(6) QTY
GROUP 06 AIR RECEIVER SYSTEM					
FIG. 17 RELIEF VALVES, AIR GAGE, DRAIN COCK, AIR VALVE (TANK) AND AIR TANK					
1	PAOZZ	96906	MS35782-2	COCK, DRAIN 1/4 MPT, EXTERNAL SEAT, ..... BRASS .....	1
2	PAOZZ	96906	MS51953-29	.NIPPLE, PIPE 1/4 IN SHORT GALV .....	1
3	PAOZZ	96906	MS39230-2	ELBOW, PIPE 90 DEGREE, 1/4 IN, GALV.....	1
4	PAOZZ	81348	WW-P-471-BDQBUDB	BUSHING, PIPE 1/2 MPT X 1/4 FPT, ..... STEEL, GALV.....	1
5	PAOZZ	19243	3500-1/2IN	VALVE 1/2 IN. NPT BALL VALVE .....	1
6	PAOZZ	96906	MS51953-75	NIPPLE 1/2 IN X 1 1/2 IN SHORT, ..... SCHED 40, STEEL .....	1
7	PAOZZ	55921	VA316	GAGE, PRESSURE, DIAL 0-300 PSI, 5 PSI ..... INCREMENTS, 1/4 IN. NPT BACK CONN., DIAPHRAGM TYPE, 2 IN. DIA. FACE.....	1
8	PAOZZ	19422	BM11352-77	.BUSHING, PIPE 3/8-IN MPT X 1/4 FPT ..... STEEL .....	1
9	PAOZZ	58818	SV-33-3/8-200	.VALVE, SAFETY RELIEF 200 PSI, 3/8 ..... NPT, BRASS, ASME RATED 152 CFM .....	1
10	PAOZZ	79470	69X4	.ELBOW, PIPE TO TUBE 1/8 MPT X 1/4 ..... IN. OD. TUBE, BRASS; WITH NUT AND SLEEVE .....	1
11	XAOZZ	79470	B69X4	.ELBOW .....	1
12	XAOZZ	79470	60X4	.SLEEVE .....	1
13	XAOZZ	79470	61X4	.NUT .....	1
14	PAOZZ	79470	3700X2	TEE, PIPE 1/8 FNPT (3 PLACES), BRASS.....	1
15	PAOZZ	08645	230318	ADAPTER, STRAIGHT, PI FOR 1/4 IN. ID..... HOSE, 1/8 MALE NPT .....	1
16	PAOZZ	96906	MS51846-1	NIPPLE, PIPE 1/8 NPT, BRASS, 3/4 IN ..... LG .....	1
17	PAOZZ	71647	RCB-HU WITH HAND UNLOADER	VALVE, PILOT 1/4 IN. FPT AIR IN, 1/8 ..... IN. FPT AIR OUT; PRESS. SETTING 173- 193 .....	1
18	PAOZZ	96906	MS51953-25	NIPPLE, PIPE 1/4 X 7/8 (CLOSE)..... SCHED 40, STEEL .....	1
19	PAOZZ	19422	BM11352-77	BUSHING, PIPE 3/8 X 1/4, STEEL .....	1
20	PAOZZ	96906	MS39230-2	ELBOW, PIPE 1/4 NPT, 90 DEGREES, ..... STEEL .....	1
21	PAOZZ	97403	13218E0056-3	CROSS 3/8 IN, 150 MI, BEADED TYPE .....	1
22	PAOZZ	96906	MS51953-52	NIPPLE, PIPE 1/2 NPT X 1-1/2 LG, ..... STEEL .....	1
23	PAOZZ	96906	MS51845-3	ELBOW 3/8 NPT, STEEL .....	1
24	PAOZZ	58818	NC25-70	VALVE, SAFETY RELIEF 1/4 IN-19PT, ..... 70 PSIG SETTING; BRASS.....	1
25	PAOZZ	96906	MS24621-15	SCREW, TAPPING, THREA TYPE U, #6 X 1/..... 4 IN LG, STEEL.....	12
26	XCOZZ	55921	QAB-266	PLATE, INFORMATION .....	1
27	XCOZZ	55921	QAB268	PLATE, CAUTION NOISE WARNING .....	1
28	XCOZZ	55921	QAB-267	PLATE, IDENTIFICATIO .....	1



**SECTION II**

**TM 5-4310-382-23P**

(1) ITEM NO	(2) SMR CODE	(3) FSCM	(4) PART NUMBER	(5) DESCRIPTION AND USABLE ON CODES (UOC)	(6) QTY
29	XDOZZ	96906	MS49005-18	PLUG, PIPE SQ. SOCKET HEAD, 2..... IN. NPT, CORED, 150# MALLEABLE IRON .....	2
30	XDOZZ	55921	OFC267	AIR TANK & BASE AY 20 IN. DIA. X..... APPROX. 63 IN. LG. - 80 GAL.; 200 PSIG ASME.....	1

END OF FIGURE

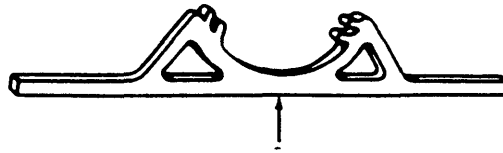
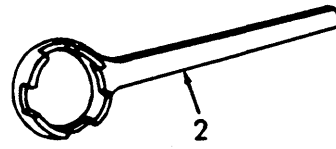
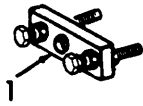


Figure 18. Special Tools.

**SECTION III**

**TM 5-4310-382-23P**

(1) ITEM NO	(2) SMR CODE	(3) FSCM	(4) PART NUMBER	(5) DESCRIPTION AND USABLE ON CODES (UOC)	(6) QTY
				GROUP 07 SPECIAL TOOLS	
				FIG. 18 SPECIAL TOOLS	
1	PAOZZ	08645	19069	PULLER, MECHANICAL FOR ENGINE FLYWHEEL .....	
2	PAOZZ	08645	19114	WRENCH, STARTER FOR ENGINE STARTER CLUTCH .....	
3	PAOZZ	08645	19167	HOLDER, FLYWHEEL FOR ENGINE FLYWHEEL	

END OF FIGURE

## CROSS-REFERENCE INDEXES

NATIONAL STOCK NUMBER INDEX					
STOCK NUMBER	FIG.	ITEM	STOCK NUMBER	FIG.	ITEM
5306-00-050-1238	3	2	5310-00-761-6882	2	8
4730-00-057-5555	6	22	4730-00-761-8538	11	3
	11	1		17	22
	15	10	5310-00-767-9425	3	12
5305-00-068-0500	7	22	5310-00-768-0319	4	8
	8	4	5310-00-809-3078	1	22
5305-00-068-0502	1	18		2	3
	2	11		2	15
5305-00-068-0511	3	17	5315-00-814-3531	3	11
	11	4	5310-00-823-8804	2	10
5305-00-071-2241	1	2	5310-00-829-9981	1	21
5305-00-071-2515	3	14	5305-00-844-9888	17	25
5305-00-073-8255	6	11	5330-00-857-7175	11	16
	9	5	5120-00-861-0787	18	2
	9	7	5120-00-861-5737	18	1
5310-00-080-8495	4	1	5120-00-861-5738	18	3
5310-00-085-7089	7	25	5330-00-882-8050	11	21
3110-00-109-1180	15	5	5330-00-898-2075	9	8
4820-00-165-0579	17	24	5305-00-989-7434	12	4
4730-00-193-0869	17	8		12	04
	17	19	5305-00-992-0440	8	27
4730-00-196-1465	1	11	2590-01-013-0103	8	29
	17	18	2940-01-016-7619	4	5
4730-00-196-1502	17	2	2940-01-016-7620	4	6
4730-00-204-3481	17	4	2990-01-016-7829	8	19
5330-00-221-4144	5	21	5310-01-017-3830	8	9
5306-00-225-8499	1	25	5305-01-017-3834	8	5
5306-00-226-4825	2	1	5305-01-017-3838	5	1
	2	13	5330-01-017-3848	7	2
4730-00-230-1996	17	16	5330-01-017-3849	6	13
4730-00-253-4412	17	3	5330-01-017-3946	5	5
	17	20	4730-01-017-4816	10	1
4730-00-287-1766	17	10	5305-01-017-5552	9	1
2910-00-358-5515	5	14	5305-01-017-5553	5	3
5365-00-374-9707	14	7	2910-01-017-8387	6	6
5310-00-407-9566	1	24	5330-01-018-0762	5	2
	2	2	2910-01-018-1929	5	6
	2	14		0005	6
	3	3	4730-01-023-2340	6	5
	3	15		12	22
5975-00-424-3403	8	3		12	23
5305-00-543-5220	6	15		17	15
5310-00-559-0070	8	10	5315-01-048-2291	8	25
5310-00-582-5965	1	3	5360-01-054-6591	8	20
	1	19	2990-01-095-8547	7	1
	2	9	5330-01-098-3732	6	21
	6	8	5330-01-098-6235	9	4
4730-00-719-2708	17	14	4730-01-119-9461	6	24
4820-00-720-4488	17	1	5305-01-162-7889	2	5
5310-00-761-6882	1	1	2990-01-181-6291	7	15

## CROSS-REFERENCE INDEXES

STOCK NUMBER	FIG.	NATIONAL STOCK NUMBER INDEX		FIG.	ITEM
		ITEM	STOCK NUMBER		
2990-01-195-3491	5	22			
5330-01-195-3646	5	9			
6680-01-195-3664	5	20			
2990-01-195-4683	7	27			
	0007	27			
5330-01-197-9277	15	15			
4720-01-204-8374	16	1			
2910-01-205-8656	6	1			
2920-01-210-6521	8	26			
2920-01-210-6522	8	2			
5930-01-210-6544	7	23			
5305-01-210-6570	7	14			
5305-01-210-6571	6	18			
5305-01-210-6592	6	19			
4730-01-213-5869	1	6			
	6	2			
4820-01-214-1260	1	8			
5310-01-214-4810	6	7			
5305-01-214-4902	8	6			
2805-01-214-4919	6	17			
5310-01-214-4948	8	24			
5340-01-214-4982	6	20			
2805-01-214-5000	6	12			
2805-01-214-5012	6	16			
4820-01-225-8255	17	9			
6685-01-225-8594	17	7			
5310-01-236-9184	12	5			
5330-01-243-9117	7	34			
5305-01-243-9142	7	3			
2920-01-286-3377	8	28			
	0008	28			

FSCM	PART NUMBER	PART NUMBER INDEX		FIG.	ITEM
			STOCK NUMBER		
86823	A-21950			1	16
19422	BM11352-77		4730-00-193-0869	17	8
				17	19
71956	B39728A			3	5
70411	B68A-14E			12	20
79470	B69X4			17	11
55921	CAA1933			3	20
55921	CAA1935			1	17
55921	CAA1938			1	4
55921	CAD2253			2	7
55921	CAD2257			2	12
55921	CAD2258			2	4
55921	CAD2259			2	16
55921	CBB-918			8	12
55921	CBB918-A			8	16
55921	CBB918-B			8	13
55921	CBB918-C			8	15
55921	CBB918-D			8	14
55921	CBB918-E			8	17
55921	CBB918-F			8	18
99539	CBM21389		5310-00-582-5965	1	3
				1	19
				2	9
				6	8
80201	CRWA1		5330-01-197-9277	15	15
75272	CWV-0507-1			12	6
89032	C1379-10241-1			2	6
86823	F-D-30543			1	12
94894	GIJ-J2-1506			16	2
84830	LC-042D-3MW			5	11
96906	MS13962-1		5365-00-374-9707	14	7
96906	MS15795-818		5310-00-767-9425	3	12
96906	MS16562-50		5315-00-814-3531	3	11
96906	MS24621-15		5305-00-844-9888	17	25
96906	MS27183-11		5310-00-809-3078	1	22
				2	3
				2	15
96906	MS27183-9		5310-00-823-8804	2	10
96906	MS3357-1			6	9
96906	MS35207-263		5305-00-989-7434	12	4
96906	MS35338-45		5310-00-407-9566	1	24
				2	2
				2	14
				3	3
				3	15
96906	MS35338-46			1	27
				3	18
				11	5
96906	MS35338-48			3	9
96906	MS35425-39		5310-00-080-8495	4	1
96906	MS35649-2312		5310-00-829-9981	1	21

FSCM	PART NUMBER	PART NUMBER INDEX		FIG.	ITEM
			STOCK NUMBER		
96906	MS35650-504			12	3
96906	MS35782-2		4820-00-720-4488	17	1
96906	MS3582-10			12	1
96906	MS39230-2		4730-00-253-4412	17	3
				17	20
96906	MS49005-18			17	29
96906	MS49005-6		4730-00-057-5555	6	22
				11	1
				15	10
96906	MS51845-3			11	2
				17	23
96906	MS51846-1		4730-00-230-1996	17	16
96906	MS51848-29		5310-01-236-9184	12	5
96906	MS51861-4		5305-01-162-7889	2	5
96906	MS51884-3			1	5
96906	MS51887-1			1	9
96906	MS51953-18		4730-01-119-9461	6	24
96906	MS51953-25		4730-00-196-1465	1	11
				17	18
96906	MS51953-29		4730-00-196-1502	17	2
96906	MS51953-52		4730-00-761-8538	11	3
				17	22
96906	MS51953-75			17	6
96906	MS51967-2		5310-00-761-6882	1	1
				2	8
96906	MS51968-2		5310-00-768-0319	4	8
96906	MS90725-10		5305-00-071-2241	1	2
96906	MS90725-111			3	8
96906	MS90725-3		5305-00-068-0500	7	22
				8	4
96906	MS90725-34		5306-00-225-8499	1	25
96906	MS90725-58			1	26
96906	MS90725-6		5305-00-068-0502	1	18
				2	11
96906	MS90726-32		5306-00-050-1238	3	2
96906	MS90728-18		5305-00-071-2515	3	14
96906	MS90728-32		5306-00-226-4825	2	1
				2	13
96906	MS90728-62		5305-00-068-0511	3	17
				11	4
96906	MS9241-116		5330-00-857-7175	11	16
96906	MS9241-117		5330-00-882-8050	11	21
96906	MS9388-012			13	13
58818	NC25-70		4820-00-165-0579	17	24
55921	OFC267			17	30
55921	OFC268			3	13
55921	OFC270			3	10
55921	OFC287			1	23
55921	OFC288			3	19
55921	OFC289			3	16
55921	OFC292			1	20

FSCM	PART NUMBER	PART NUMBER INDEX		FIG.	ITEM
			STOCK NUMBER		
55921	OFC839			12	17
55921	OFC840			12	2
55921	OFC841			12	7
55921	OFC846A			6	3
55921	OFC846B			1	7
55921	OFC846C			6	10
55921	OFC846D			6	4
55921	OFC851			12	8
55921	OF478			3	4
58818	P7575S			12	21
55921	QAB-266			17	26
55921	QAB-267			17	28
55921	QAB268			17	27
71647	RCB-HU WITH HAND UNLOADER			17	17
11583	RJ8C			8	1
80063	SCB69389-4			5	25
58818	SV-33-3/8-200	4820-01-225-8255		17	9
86283	T-17-4			1	14
86283	T-19-1			1	15
55921	VA316	6685-01-225-8594		17	7
55921	VA786			12	13
55921	VA787			12	9
55921	VR318	4720-01-204-8374		16	1
81348	WW-P-471-BDQBUDB	4730-00-204-3481		17	4
18876	10608076-5	5310-00-085-7089		7	25
71956	119219			3	7
97403	13218E0056-3			17	21
78500	1428F58			7	19
96906	14303-3BTU			6	23
55921	179922-150102			12	18
08645	19069	5120-00-861-5737		18	1
08645	19114	5120-00-861-0787		18	2
08645	19167	5120-00-861-5738		18	3
08645	212296			10	8
08645	212301			5	4
08645	212366			9	3
08645	212904			5	13
08645	221432-0326			3	21
08645	221535			8	7
08645	221551			10	10
08645	221596			10	28
08645	221653			7	17
08645	221747			5	32
08645	221796			7	21
08645	221798	2590-01-013-0103		8	29
08645	221939			5	17
08645	222271			4	3
08645	222272			4	4
08645	222299			10	16
08645	222329			10	17



FSCM	PART NUMBER	PART NUMBER INDEX		FIG.	ITEM
			STOCK NUMBER		
08645	222450		5310-01-214-4948	8	24
08645	222598			7	7
08645	222698		2990-01-195-4683	7	27
				7	27
08645	222725			9	2
08645	222744			9	6
08645	223016		5340-01-214-4982	6	20
08645	223597			7	31
08645	230228			7	10
08645	230318		4730-01-023-2340	6	5
				12	22
				17	15
08645	230543			7	6
08645	230896			5	26
08645	231001		5310-01-214-4810	6	7
08645	231007			4	7
08645	231057			10	13
08645	23108			5	15
08645	231082			8	22
08645	23123			5	23
08645	260414			7	5
08645	260695		5360-01-054-6591	8	20
08645	260924			10	19
08645	261183			10	9
08645	261185			10	27
08645	261236		2990-01-016-7829	8	19
08645	261462			10	30
08645	26155			5	24
08645	262135			10	22
08645	26828			10	25
08645	270267		5330-01-017-3946	5	5
08645	270268		5330-01-195-3646	5	9
08645	270782		2940-01-016-7620	4	6
08645	270856			10	6
08645	270872		5330-01-018-0762	5	2
08645	270917		5330-01-098-3732	6	21
08645	271075		5330-01-098-6235	9	4
08645	271736		5330-01-243-9117	7	34
08645	27803		5330-00-898-2075	9	8
08645	280112			9	9
08645	280457			7	13
08645	2'91508		5975-00-424-3403	8	3
08645	291667			10	7
08645	291675			10	5
08645	292260			10	24
08645	292681		2910-00-358-5515	5	14
08645	295871			7	9
08645	298514			5	27
08645	298799			7	18
08645	299691			10	18
31493	302WV3			1	11

FSCM	PART NUMBER	PART NUMBER INDEX		FIG.	ITEM
			STOCK NUMBER		
19243	3500-1/2IN			17	5
79470	3700X2		4730-00-719-2708	17	14
08645	390391		2990-01-095-8547	7	1
08645	390818		2910-01-017-8387	6	6
08645	390930		2940-01-016-7619	4	5
08645	391063			4	2
08645	391086		5330-01-017-3848	7	28
08645	391575			9	10
08645	391583			5	30
08645	391596			5	18
08645	391737			10	11
08645	391829			5	31
08645	391836			5	29
08645	392032			5	8
08645	392033		2910-01-018-1929	5	6
08645	392157			7	26
08645	392273		2920-01-210-6522	8	2
08645	392295		2805-01-214-5000	6	12
08645	392655			6	14
08645	393576			7	2
08645	393761		2805-01-214-5012	6	16
08645	393860			10	14
08645	393893			10	4
08645	394170		2805-01-214-4919	6	17
08645	394358		2910-01-205-8656	6	1
08645	394558		2990-01-181-6291	7	15
08645	394656			10	31
08645	394661			10	20
08645	394665			10	21
08645	394681			5	19
08645	394730		2990-01-195-3491	5	22
08645	394897			7	20
08645	396691		5930-01-210-6544	7	23
08645	396775			8	21
08645	398194			7	33
08645	398265		2920-01-286-3377	8	28
08645	398525			8	11
08645	398595			7	24
08645	398874		2920-01-210-6521	8	26
08645	399152			8	8
08645	399700			10	23
08645	399949		4820-01-214-1260	1	8
23224	4-300-AB-10			1	13
71956	400544			3	6
08645	490179			7	8
08645	490817			7	4
70411	60A-14			12	19
				12	20
79470	60X4			17	12
70411	61A-14			12	15
79470	61X4			17	13

FSCM	PART NUMBER	PART NUMBER INDEX		FIG.	ITEM
			STOCK NUMBER		
23043	6206		3110-00-109-1180	15	5
08645	65906			10	29
08645	66728			7	11
08645	66884			7	12
70411	68A-14E			12	16
08645	68238			7	16
08645	68667		5330-00-221-4144	5	21
08645	68838		5330-01-017-3849	6	13
79470	69X4		4730-00-287-1766	17	10
55921	70103-11210			13	12
55921	70103-11230			13	11
55921	70103-11270			13	9
55921	70111-57700			15	6
55921	70111-57711			15	8
55921	70111-57720			15	7
55921	70111-57730			15	9
55921	70123-57190			11	15
55921	70123-76050-4024			12	25
55921	70123-76210			12	24
55921	70124-57600			11	17
55921	70124-57610			11	18
55921	70124-57670			11	20
55921	70124-61030			14	5
55921	70124-61050			14	6
55921	70124-87010			13	25
55921	70153-00000			11	6
55921	70153-11011			13	29
55921	70153-11021			13	30
55921	70153-11030			13	31
55921	70153-11200			13	16
55921	70153-11210			13	24
55921	70153-11220			13	19
55921	70153-11230			13	20
55921	70153-11270			13	17
55921	70153-11280			13	18
55921	70153-12200			13	8
55921	70153-12220			13	10
55921	70153-31011			13	40
55921	70153-31021			13	41
55921	70153-31031			13	36
55921	70153-31071			13	37
55921	70153-31080			13	23
55921	70153-31120			13	35
55921	70153-32031			13	38
55921	70153-32071			13	39
55921	70153-51011			14	3
55921	70153-51031			14	4
55921	70153-56011			14	22
55921	70153-56060			12	26
55921	70153-57011			15	16
55921	70153-57030			15	13

FSCM	PART NUMBER	PART NUMBER INDEX		FIG.	ITEM
			STOCK NUMBER		
55921	70153-57040			15	14
55921	70153-57061			15	3
55921	70153-57071			15	4
55921	70153-61011			14	9
55921	70153-61081			14	14
55921	70153-61090			14	13
55921	70153-61121			14	8
55921	70153-61211			14	15
55921	70153-61250			14	11
55921	70153-62011			14	19
55921	70153-62030			14	16
55921	70153-62050			14	17
55921	70153-62081			14	20
55921	70153-62121			14	18
55921	70153-62211			14	21
55921	70153-66001			11	7
55921	70153-66011			11	8
55921	70153-66120			11	13
55921	70153-66132			11	12
55921	70153-66142			11	14
55921	70153-66160			11	11
55921	70153-71111			13	7
55921	70153-71161			13	5
55921	70153-71171			13	6
55921	70153-71180			13	2
55921	79921-150202			12	11
55921	79922-130707			13	26
55921	79922-150102			12	10
55921	79926-150101			12	14
55921	79927-15101			12	12
08645	90576	5310-01-017-3830		8	9
55921	91501-1306015			13	3
				13	21
55921	91501-1308030			12	23
55921	91501-1310090			13	27
55921	915011310030			14	1
				15	11
55921	91507-1305012			13	33
55921	91521-1306025			13	14
55921	91521-1308060			13	1
55921	91521-1310030			15	1
08645	91920			5	10
55921	92501-130800			14	10
55921	92501-230500			13	32
55921	92517-230600			11	9
55921	92521-170600			11	10
55921	92521-171000			14	2
55921	92522-130500			13	34
55921	92522-130600			13	4
				13	15
				13	22

FSCM	PART NUMBER	PART NUMBER INDEX		FIG.	ITEM
			STOCK NUMBER		
55921	92522-130800			14	12
55921	92522-131000			13	28
				15	2
				15	12
08645	92613			8	23
08645	92791	5310-00-559-0070		8	10
08645	92909			10	15
08645	93043			5	12
08645	93053	4730-01-213-5869		1	6
				6	2
08645	93208	5305-01-017-3838		5	1
08645	93306	5315-01-048-2291		8	25
08645	93307			10	12
08645	93381	5305-00-992-0440		8	27
08645	93394	5305-00-073-8255		6	11
				9	5
				9	7
08645	93415	5305-01-017-5553		5	3
08645	93418	4730-01-017-4816		10	1
08645	93496	5305-01-214-4902		8	6
08645	93499			5	16
				5	28
08645	93535	5305-01-017-3834		8	5
08645	93559	5305-01-210-6571		6	18
08645	93585			10	2
55921	93601-890700			11	19
08645	93630			10	26
08645	93705	5305-00-543-5220		6	15
08645	93712			7	29
08645	93713			7	30
08645	93723	5305-01-017-5552		9	1
08645	93764			10	3
08645	93927	5305-01-210-6592		6	19
08645	94062	5305-01-210-6570		7	14
08645	94063	5305-01-243-9142		7	3
08645	94139			7	32
08645	94152			5	7
24161	9720			3	1
08645	99525	6680-01-195-3664		5	20

## CROSS-REFERENCE INDEXES

FIG.	ITEM	FIGURE AND ITEM NUMBER INDEX STOCK NUMBER	CAGEC	PART NUMBER
1	1	5310-00-761-6882	96906	MS51967-2
1	2	5305-00-071-2241	96906	MS90725-10
1	3	5310-00-582-5965	99539	CBM21389
1	4		55921	CAA1938
1	5		96906	MS51884-3
1	6	4730-01-213-5869	08645	93053
1	7		55921	OFC846B
1	8	4820-01-214-1260	08645	399949
1	9		96906	MS51887-1
1	11		31493	302WV3
1	11	4730-00-196-1465	96906	MS51953-25
1	12		86823	F-D-30543
1	13		23224	40-300-AB-10
1	14		86283	T-17-4
1	15		86283	T-19-1
1	16		86823	A-21950
1	17		55921	CAA1935
1	18	5305-00-068-0502	96906	MS90725-6
1	19	5310-00-582-5965	99539	CBM21389
1	20		55921	OFC292
1	21	5310-00-829-9981	96906	MS35649-2312
1	22	5310-00-809-3078	96906	MS27183-11
1	23		55921	OFC287
1	24	5310-00-407-9566	96906	MS35338-45
1	25	5306-00-225-8499	96906	MS90725-34
1	26		96906	MS90725-58
1	27		96906	MS35338-46
2	1	5306-00-226-4825	96906	MS90728-32
2	2	5310-00-407-9566	96906	MS35338-45
2	3	5310-00-809-3078	96906	MS27183-11
2	4		55921	CAD2258
2	5	5305-01-162-7889	96906	MS51861-4
2	6		89032	C1379-10241-1
2	7		55921	CAD2253
2	8	5310-00-761-6882	96906	MS51967-2
2	9	5310-00-582-5965	99539	CBM21389
2	10	5310-00-823-8804	96906	MS27183-9
2	11	5305-00-068-0502	96906	MS90725-6
2	12		55921	CAD2257
2	13	5306-00-226-4825	96906	MS90728-32
2	14	5310-00-407-9566	96906	MS35338-45
2	15	5310-00-809-3078	96906	MS27183-11
2	16		55921	CAD2259
3	1		24161	9720
3	2	5306-00-050-1238	96906	MS90726-32
3	3	5310-00-407-9566	96906	MS35338-45
3	4		55921	OF478
3	5		71956	B39728A
3	6		71956	400544
3	8		96906	MS90725-111
3	9		96906	MS35338-48

## CROSS-REFERENCE INDEXES

FIG.	ITEM	FIGURE AND ITEM NUMBER INDEX STOCK NUMBER	CAGEC	PART NUMBER
3	10		55921	OFC270
3	11	5315-00-814-3531	96906	MS16562-50
3	12	5310-00-767-9425	96906	MS15795-818
3	13		55921	OFC268
3	14	5305-00-071-2515	96906	MS90728-18
3	15	5310-00-407-9566	96906	MS35338-45
3	16		55921	OFC289
3	17	5305-00-068-0511	96906	MS90728-62
3	18		96906	MS35338-46
3	19		55921	OFC288
3	20		55921	CAA1933
3	21		08645	221432-0326
3	7		71956	119219
4	1	5310-00-080-8495	96906	MS35425-39
4	2		08645	391063
4	3		08645	222271
4	4		08645	222272
4	5	2940-01-016-7619	08645	390930
4	6	2940-01-016-7620	08645	270782
4	7		08645	231007
4	8	5310-00-768-0319	96906	MS51968-2
5	1	5305-01-017-3838	08645	93208
5	2	5330-01-018-0762	08645	270872
5	3	5305-01-017-5553	08645	93415
5	4		08645	212301
5	5	5330-01-017-3946	08645	270267
5	6	2910-01-018-1929	08645	392033
5	7		08645	94152
5	8		08645	392032
5	9	5330-01-195-3646	08645	270268
5	10		08645	91920
5	11		84830	LC-042D-3MW
5	12		08645	93043
5	13		08645	212904
5	14	2910-00-358-5515	08645	292681
5	15		08645	23108
5	16		08645	93499
5	17		08645	221939
5	18		08645	391596
5	19		08645	394681
5	20	6680-01-195-3664	08645	99525
5	21	5330-00-221-4144	08645	68667
5	22	2990-01-195-3491	08645	394730
5	23		08645	23123
5	24		08645	26155
5	25		80063	SCB69389-4
5	26		08645	230896
5	27		08645	298514
5	28		08645	93499
5	29		08645	391836
5	30		08645	391583

## CROSS-REFERENCE INDEXES

FIG.	ITEM	FIGURE AND ITEM NUMBER INDEX STOCK NUMBER	CAGEC	PART NUMBER
5	31		08645	391829
5	32		08645	221747
6	1	2910-01-205-8656	08645	394358
6	2	4730-01-213-5869	08645	93053
6	3		55921	OFC846A
6	4		55921	OFC846D
6	5	4730-01-023-2340	08645	230318
6	6	2910-01-017-8387	08645	390818
6	7	5310-01-214-4810	08645	231001
6	8	5310-00-582-5965	99539	CBM21389
6	9		96906	MS3357-1
6	10		55921	OFC846C
6	11	5305-00-073-8255	08645	93394
6	12	2805-01-214-5000	08645	392295
6	13	5330-01-017-3849	08645	68838
6	14		08645	392655
6	15	5305-00-543-5220	08645	93705
6	16	2805-01-214-5012	08645	393761
6	17	2805-01-214-4919	08645	394170
6	18	5305-01-210-6571	08645	93559
6	19	5305-01-210-6592	08645	93927
6	20	5340-01-214-4982	08645	223016
6	21	5330-01-098-3732	08645	270917
6	22	4730-00-057-5555	96906	MS49005-6
6	23		96906	14303-3BTU
6	24	4730-01-119-9461	96906	MS51953-18
7	1	2990-01-095-8547	08645	390391
7	2		08645	393576
7	3	5305-01-243-9142	08645	94063
7	4		08645	490817
7	5		08645	260414
7	6		08645	230543
7	7		08645	222598
7	8		08645	490179
7	9		08645	295871
7	10		08645	230228
7	11		08645	66728
7	12		08645	66884
7	13		08645	280457
7	14	5305-01-210-6570	08645	94062
7	15	2990-01-181-6291	08645	394558
7	16		08645	68238
7	17		08645	221653
7	18		08645	298799
7	19		78500	1428F58
7	20		08645	394897
7	21		08645	221796
7	22	5305-00-068-0500	96906	MS90725-3
7	23	5930-01-210-6544	08645	396691
7	24		08645	398595
7	25	5310-00-085-7089	18876	10608076-5



## CROSS-REFERENCE INDEXES

FIG.	ITEM	FIGURE AND ITEM NUMBER INDEX STOCK NUMBER	CAGEC	PART NUMBER
7	26		08645	392157
7	27	2990-01-195-4683	08645	222698
7	27	2990-01-195-4683	08645	222698
7	28	5330-01-017-3848	08645	391086
7	29		08645	93712
7	30		08645	93713
7	31		08645	223597
7	32		08645	94139
7	33		08645	398194
7	34	5330-01-243-9117	08645	271736
8	1		11583	RJ8C
8	2	2920-01-210-6522	08645	392273
8	3	5975-00-424-3403	08645	291508
8	4	5305-00-068-0500	96906	MS90725-3
8	5	5305-01-017-3834	08645	93535
8	6	5305-01-214-4902	08645	93496
8	7		08645	221535
8	8		08645	399152
8	9	5310-01-017-3830	08645	90576
8	10	5310-00-559-0070	08645	92791
8	11		08645	398525
8	12		55921	CBB-918
8	13		55921	CBB918-B
8	14		55921	CBB918-D
8	15		55921	CBB918-C
8	16		55921	CBB918-A
8	17		55921	CBB918-E
8	18		55921	CBB918-F
8	19	2990-01-016-7829	08645	261236
8	20	5360-01-054-6591	08645	260695
8	21		08645	396775
8	22		08645	231082
8	23		08645	92613
8	24	5310-01-214-4948	08645	222450
8	25	5315-01-048-2291	08645	93306
8	26	2920-01-210-6521	08645	398874
8	27	5305-00-992-0440	08645	93381
8	28	2920-01-286-3377	08645	398265
8	29	2590-01-013-0103	08645	221798
9	1	5305-01-017-5552	08645	93723
9	2		08645	222725
9	3		08645	212366
9	4	5330-01-098-6235	08645	271075
9	5	5305-00-073-8255	08645	93394
9	6		08645	222744
9	7	5305-00-073-8255	08645	93394
9	8	5330-00-898-2075	08645	27803
9	9		08645	280112
9	10		08645	391575
10	1	4730-01-017-4816	08645	93418
10	2		08645	93585

FIG.	ITEM	FIGURE AND ITEM NUMBER INDEX STOCK NUMBER	CAGEC	PART NUMBER
10	3		08645	93764
10	4		08645	393893
10	5		08645	291675
10	6		08645	270856
10	7		08645	291667
10	8		08645	212296
10	9		08645	261183
10	10		08645	221551
10	11		08645	391737
10	12		08645	93307
10	13		08645	231057
10	14		08645	393860
10	15		08645	92909
10	16		08645	222299
10	17		08645	222329
10	18		08645	299691
10	19		08645	260924
10	20		08645	394661
10	21		08645	394665
10	22		08645	262135
10	23		08645	399700
10	24		08645	292260
10	25		08645	26828
10	26		08645	93630
10	27		08645	261185
10	28		08645	221596
10	29		08645	65906
10	30		08645	261462
10	31		08645	394656
11	1	4730-00-057-5555	96906	MS49005-6
11	2		96906	MS51845-3
11	3	4730-00-761-8538	96906	MS51953-52
11	4	5305-00-068-0511	96906	MS90728-62
11	5		96906	M535338-46
11	6		55921	70153-00000
11	7		55921	70153-66001
11	8		55921	70153-66011
11	9		55921	92517-230600
11	10		55921	92521-170600
11	11		55921	70153-66160
11	12		55921	70153-66132
11	13		55921	70153-66120
11	14		55921	70153-66142
11	15		55921	70123-57190
11	16	5330-00-857-7175	96906	MS9241-116
11	17		55921	70124-57600
11	18		55921	70124-57610
11	19		55921	93601-890700
11	20		55921	70124-57670
11	21	5330-00-882-8050	96906	MS9241-117
12	1		96906	MS3582-10

## CROSS-REFERENCE INDEXES

FIG.	ITEM	FIGURE AND ITEM NUMBER INDEX STOCK NUMBER	CAGEC	PART NUMBER
12	2		55921	OFC840
12	3		96906	MS35650-504
12	4	5305-00-989-7434	96906	MS35207-263
12	5	5310-01-236-9184	96906	MS51848-29
12	6		75272	CWV-0507-1
12	7		55921	OFC841
12	8		55921	OFC851
12	9		55921	VA787
12	10		55921	79922-150102
12	11		55921	79921-150202
12	12		55921	79927-15101
12	13		55921	VA786
12	14		55921	79926-150101
12	15		70411	61A-14
12	16		70411	68A-14E
12	17		55921	OFC839
12	18		55921	179922-150102
12	19		70411	60A-14
12	20		70411	B68A-14E
12	20		70411	60A-14
12	21		58818	P75755
12	22	4730-01-023-2340	08645	230318
12	23		55921	91501-1308030
12	24		55921	70123-76210
12	25		55921	70123-76050-4024
12	26		55921	70153-56060
13	1		55921	91521-1308060
13	2		55921	70153-71180
13	3		55921	91501-1306015
13	4		55921	92522-130600
13	5		55921	70153-71161
13	6		55921	70153-71171
13	7		55921	70153-71111
13	8		55921	70153-12200
13	9		55921	70103-11270
13	10		55921	70153-12220
13	11		55921	70103-11230
13	12		55921	70103-11210
13	13		96906	MS9388-012
13	14		55921	91521-1306025
13	15		55921	92522-130600
13	16		55921	70153-11200
13	17		55921	70153-11270
13	18		55921	70153-11280
13	19		55921	70153-11220
13	20		55921	70153-11230
13	21		55921	91501-1306015
13	22		55921	92522-130600
13	23		55921	70153-31080
13	24		55921	70153-11210
13	25		55921	70124-87010

## CROSS-REFERENCE INDEXES

FIG.	ITEM	FIGURE AND ITEM NUMBER INDEX STOCK NUMBER	CAGEC	PART NUMBER
13	26	4730-01-225-8555	55921	79922-130707
13	27		55921	91501-1310090
13	28		55921	92522-131000
13	29		55921	70153-11011
13	30		55921	70153-11021
13	31		55921	70153-11030
13	32		55921	92501-230500
13	33		55921	91507-1305012
13	34		55921	92522-130500
13	35		55921	70153-31120
13	36		55921	70153-31031
13	37		55921	70153-31071
13	38		55921	70153-32031
13	39		55921	70153-32071
13	40		55921	70153-31011
13	41		55921	70153-31021
14	1		55921	915011310030
14	2		55921	92521-171000
14	3		55921	70153-51011
14	4		55921	70153-51031
14	5		55921	70124-61030
14	6		55921	70124-61050
14	7	5365-00-374-9707	96906	MS13962-1
14	8		55921	70153-61121
14	9		55921	70153-61011
14	10		55921	92501-130800
14	11		55921	70153-61250
14	12		55921	92522-130800
14	13		55921	70153-61090
14	14		55921	70153-61081
14	15		55921	70153-61211
14	16		55921	70153-62030
14	17		55921	70153-62050
14	18		55921	70153-62121
14	19		55921	70153-62011
14	20		55921	70153-62081
14	21		55921	70153-62211
14	22		55921	70153-56011
15	1		55921	91521-1310030
15	2		55921	92522-131000
15	3		55921	70153-57061
15	4		55921	70153-57071
15	5	3110-00-109-1180	23043	6206
15	6		55921	70111-57700
15	7		55921	70111-57720
15	8		55921	70111-57711
15	9		55921	70111-57730
15	10	4730-00-057-5555	96906	MS49005-6
15	11		55921	915011310030
15	12		55921	92522-131000
15	13		55921	70153-57030

## CROSS-REFERENCE INDEXES

FIG.	ITEM	FIGURE AND ITEM NUMBER INDEX STOCK NUMBER	CAGEC	PART NUMBER
15	14		55921	70153-57040
15	15	5330-01-197-9277	80201	CRWA1
15	16		55921	70153-57011
16	1	4720-01-204-8374	55921	VR318
16	2		94894	GIJ-J2-1506
17	1	4820-00-720-4488	96906	MS35782-2
17	2	4730-00-196-1502	96906	MS51953-29
17	3	4730-00-253-4412	96906	MS39230-2
17	4	4730-00-204-3481	81348	WW-P-471-BDQBUDB
17	5		19243	3500-1/2IN
17	6		96906	MS51953-75
17	7	6685-01-225-8594	55921	VA316
17	8	4730-00-193-0869	19422	BM11352-77
17	9	4820-01-225-8255	58818	SV-33-3/8-200
17	10	4730-00-287-1766	73470	69X4
17	11		79470	B69X4
17	12		79470	60X4
17	13		79470	61X4
17	14	4730-00-719-2708	79470	3700X2
17	15	4730-01-023-2340	08645	230318
17	16	4730-00-230-1996	96906	MS51846-1
17	17		71647	RCB-HU WITH HAND UNLOADER
17	18	4730-00-196-1465	96906	MS51953-25
17	19	4730-00-193-0869	19422	BM11352-77
17	20	4730-00-253-4412	96906	MS39230-2
17	21		97403	13218E0056-3
17	22	4730-00-761-8538	96906	MS51953-52
17	23		96906	MS51845-3
17	24	4820-00-165-0579	58818	NC25-70
17	25	5305-00-844-9888	96906	MS24621-15
17	26		55921	QAB-266
17	27		55921	QAB268
17	28		55921	QAB-267
17	29		96906	MS49005-18
17	30		55921	OFC267
18	1	5120-00-861-5737	08645	19069
18	2	5120-00-861-0787	08645	19114
18	3	5120-00-861-5738	08645	19167

RECOMMENDED CHANGES TO EQUIPMENT TECHNICAL PUBLICATIONS



THEN... JOT DOWN THE DOPE ABOUT IT ON THIS FORM. CAREFULLY TEAR IT OUT. FOLD IT AND DROP IT IN THE MAIL!

SOMETHING WRONG WITH THIS PUBLICATION?

FROM: (PRINT YOUR UNIT'S COMPLETE ADDRESS)  
**PFC JOHN DOE**  
**COA, 3d ENGINEER BN**  
**FT. LEONARDWOOD, MO 63108**  
 DATE SENT

PUBLICATION NUMBER: **TM 5-4310-382-23P**  
 PUBLICATION DATE: **15 Nov 1989**  
 PUBLICATION TITLE: **COMPRESSOR UNIT, RECIPROCATING**

BE EXACT... PIN-POINT WHERE IT IS				IN THIS SPACE TELL WHAT IS WRONG AND WHAT SHOULD BE DONE ABOUT IT:
PAGE NO	PARA-GRAPH	FIGURE NO	TABLE NO	
6	2-1 a			In line 6 of paragraph 2-1a the manual states the engine has <u>6</u> Cylinders. The engine on my set only has <u>4</u> Cylinders. Change the manual to show <u>4</u> Cylinders.
B1		4-3		Callout 16 on figure 4-3 is pointing at a <u>bolt</u> . In key to figure 4-3, item 16 is called a <u>shim</u> - Please Correct one or the other.
125	line 20			I ordered a gasket, item 19 on figure B-16 by NSN 2 910-05-762-3001. I got a gasket but it doesn't fit. Supply says I got what I ordered, so the NSN is wrong. Please give me a good NSN

PRINTED NAME, GRADE OR TITLE, AND TELEPHONE NUMBER: **JOHN DOE, PFC (268) 317.7111**  
 SIGN HERE: **JOHN DOE**

DA FORM 2028-2  
 1 JUL 79

PREVIOUS EDITIONS ARE OBSOLETE.  
 DRSTS-M Overprint 1, 1 Nov 80

PS --IF YOUR OUTFIT WANTS TO KNOW ABOUT YOUR RECOMMENDATION MAKE A CARBON COPY OF THIS AND GIVE IT TO YOUR HEADQUARTERS

TEAR ALONG PERFORATED LINE

RECOMMENDED CHANGES TO EQUIPMENT TECHNICAL PUBLICATIONS

**SOMETHING WRONG WITH THIS PUBLICATION**



THEN ... JOT DOWN THE DOPE ABOUT IT ON THIS FORM. CAREFULLY TEAR IT OUT. FOLD IT AND DROP IT IN THE MAIL.

FROM: (PRINT YOUR UNIT'S COMPLETE ADDRESS)

DATE SENT

PUBLICATION NUMBER

PUBLICATION DATE

PUBLICATION TITLE

BE EXACT PIN-POINT WHERE IT IS

IN THIS SPACE TELL WHAT IS WRONG AND WHAT SHOULD BE DONE ABOUT IT:

PAGE NO

PARA-GRAPH

FIGURE NO

TABLE NO

TEAR ALONG DOTTED LINE

PRINTED NAME, GRADE OR TITLE AND TELEPHONE NUMBER

SIGN HERE

REVERSE OF DA FORM 2026-2 Reverse of DRSTS-M Overprint 2,  
1 Nov 80

FILL IN YOUR  
UNIT'S ADDRESS

FOLD BACK

DEPARTMENT OF THE ARMY

OFFICIAL BUSINESS

COMMANDER  
U S ARMY TROOP SUPPORT COMMAND  
ATTN: AMSTR-MCTS  
4300 GOODFELLOW BOULEVARD  
ST. LOUIS, MO 63120-1798

TEAR ALONG PERFORATED LINE



By Order of the Secretary of the Army:

**CARL E. VUONO**  
*General, United States Army*  
*Chief of Staff*

Official:

**WILLIAM J. MEEHAN, II**  
*Brigadier General, United States Army*  
*The Adjutant General*

**DISTRIBUTION:**

To be distributed in accordance with DA Form 12-25A, Unit, Intermediate Direct Support and Intermediate General Support Maintenance requirements for Compressor, Reciprocating, Air, Tank Mounted, 15 CFM, 175 PSI, (MGR5-8M-1)

## The Metric System and Equivalents

### Linear Measure

1 centimeter = 10 millimeters = .39 inch  
 1 decimeter = 10 centimeters = 3.94 inches  
 1 meter = 10 decimeters = 39.37 inches  
 1 dekameter = 10 Meters = 32.8 feet  
 1 hectometer = 10 dekameters = 328.08 feet  
 1 kilometer = 10 hectometers = 3,280.8 feet

### Weights

1 centigram = 10 milligrams = .15 grain  
 1 decigram = 10 centigrams = 1.54 grains  
 1 gram = 10 decigram = 0.35 ounce  
 1 dekagram = 10 Grams = .35 ounce  
 1 hectogram = 10 dekagrams = 3.52 ounces  
 1 kilogram = 10 hectograms = 2.2 pounds  
 1 quintal = 100 kilograms = 220.46 pounds  
 1 metric ton = 10 quintals = 1.1 short tons

### Liquid Measure

1 centiliter = 10 milliliters = .34 fluid ounce  
 1 deciliter = 10 centiliters = 3.38 fluid ounces  
 1 liter = 10 deciliters = 33.81 fluid ounces  
 1 dekaliter = 10 liters = 2.64 gallons  
 1 hectoliter = 10 dekaliters = 26.42 gallons  
 1 kiloliter = 10 hectoliters = 264.18 gallons

### Square Measure

1 sq. centimeter = 100 sq millimeters = .155 sq. inch  
 1 sq. decimeter = 100 sq centimeters = 15.5 sq. inches  
 1 sq. meter (centare) = 100 sq decimeters = 10.76 sq. feet  
 1 sq. dekameter (are) = 1,076.4 sq. feet  
 1 sq. hectometer (hectare) = 100 sq. dekameters = 2.47 acres  
 1 sq. kilometer = 100 sq. hectometers = .386 sq. mile

### Cubic Measure

1 cu. centimeter = 1000 cu. millimeters = .06 cu. inch  
 1 cu. decimeter = 1000 cu. decimeters = 61.02 cu. inches  
 1 cu. meter = 1000 cu. decimeters = 35.31 cu. feet

## Approximate Conversion Factors

<i>To change</i>	<i>To</i>	<i>Multiply by</i>	<i>To change</i>	<i>To</i>	<i>Multiply by</i>
inches	centimeters	2.540	ounce-inches	newton-meters	.007062
feet	meters	.305	centimeters	inches	.394
yards	meters	.914	meters	feet	3.280
miles	kilometers	1.609	meters	yards	1.094
square inches	square centimeters	6.451	kilometers	miles	.621
square feet	square meters	.093	square centimeters	square inches	.155
square yards	square meters	.836	square meters	square feet	10.764
square miles	square kilometers	2.590	square meters	square yards	1.196
acres	square hectometers	.405	square kilometers	square miles	.386
cubic feet	cubic meters	.028	square hectometers	acres	2.471
cubic yards	cubic meters	.765	cubic meters	cubic feet	35.315
fluid ounces	milliliters	29.573	cubic meters	cubic yards	1.308
pints	liters	.473	milliliters	fluid ounces	.034
quarts	liters	.946	liters	pints	2.113
gallons	liters	3.785	liters	quarts	1.057
ounces	grams	28.349	liters	gallons	.264
pounds	kilograms	.454	grams	ounces	.035
short tons	metric tons	.907	kilograms	pounds	2.205
pound-feet	newton-meters	1.356	metric tons	short tons	1.102
pounds-inches	newton-meters	.11296			

### Temperature (Exact)

°F Fahrenheit Temperature      5/9 (after subtracting 32)      Celsius Temperature      °C

